

**ECU**  
REMAPPING

CARS/TRUCKS/TRACTORS  
**MODULES**

MOTORBIKES  
**MODULES**

POWER TEST  
**BENCHES**



*Flash*  
**POINT**  
**NEW GENIUS**

***User manual***

## General index

<b>1</b>	<b>LICENCE AGREEMENT AND WARRANTY .....</b>	<b>5</b>
1.1	Product Warranty .....	5
1.2	User license, conditions of use and warranty .....	8
<b>2</b>	<b>INTRODUCTION .....</b>	<b>12</b>
2.1	Characteristics .....	12
2.2	Technical specifications .....	13
2.3	Kit composition .....	13
2.4	Description of indicator lights and connectors .....	15
2.5	Security Dongle F32GN067 .....	18
2.6	Preliminary operations .....	20
<b>3</b>	<b>PRECAUTIONS FOR CORRECT USE OF FLASH POINT.....</b>	<b>21</b>
3.1	Introduction .....	21
3.2	Minimum system requirements .....	21
3.3	The precautions to be followed during read and programming operations with the New Genius tool:.....	21
<b>4</b>	<b>SOFTWARE DOWNLOAD.....</b>	<b>22</b>
<b>5</b>	<b>SOFTWARE INSTALLATION .....</b>	<b>23</b>
5.1	Introduction .....	23
5.2	Installation procedure.....	23
5.3	Flash Point OPEN 2 .....	25
5.4	Converting a Flash Point system from normal to OPEN 2. ....	26
<b>6</b>	<b>CONNECTION TO PC .....</b>	<b>27</b>
6.1	Hardware connection .....	27
<b>7</b>	<b>FIRST USE.....</b>	<b>28</b>
7.1	Introduction .....	28
7.2	System update .....	29
7.3	System Backup .....	29
<b>8</b>	<b>MAIN SCREEN .....</b>	<b>30</b>
8.1	Introduction .....	30
8.2	Main menu .....	31



8.3	Counter .....	32
<b>9</b>	<b>OPERATING PROCEDURES .....</b>	<b>33</b>
9.1	Reading the ECU .....	33
9.2	Transfer a file from New Genius to Flash Point PC .....	35
9.3	Sending a file to your Manager .....	36
9.4	Receiving the modified file form your Manager.....	38
9.5	Transfer a file from Flash Point PC to New Genius .....	39
9.6	Serial Write .....	40
9.7	Patch Unlock and writing via OBD with New Genius .....	42
9.8	Special Tools .....	43
9.8.1	Cancelling errors .....	43
9.8.2	Injector code read/write.....	43
9.8.3	Counter read/reset .....	43
9.8.4	Screwdriver .....	44
<b>10</b>	<b>OPERATIONS FOR FLASH POINT OPEN 2 .....</b>	<b>45</b>
10.1	Sending a file to your Manager .....	45
10.2	Receiving and loading the modified file to/from your Manager .....	46
10.3	Deleting a file.....	48
10.4	Other special operations .....	49
<b>11</b>	<b>TOOL MENU .....</b>	<b>50</b>
11.1	Introduction.....	50
11.2	Set Up .....	51
11.2.1	Screen .....	52
11.2.2	Language .....	53
11.2.3	Date & Time.....	54
11.3	Test .....	55
11.3.1	Test Display.....	55
11.3.2	LED Test .....	56
11.3.3	Battery Test .....	56
11.3.4	SD Card Test.....	56
<b>12</b>	<b>WIRING LIST AND COMPOSITION .....</b>	<b>57</b>
<b>13</b>	<b>APPENDIX 'A' (SPECIAL PROCEDURES – VERIFICATION) .....</b>	<b>58</b>

14	APPENDIX 'B' (SPECIAL PROCEDURES – INJECTOR CODES) ...	60
15	APPENDIX C (VAG COUNTER RESET).....	64

# 1 LICENCE AGREEMENT AND WARRANTY

## 1.1 Product Warranty

DIMSPORT S.R.L. warrants that the product is free of inherent defects in accordance with Italian Legislative Decree 206/05.

### Procedure

---

If the purchaser wishes to exercise the rights contained in these warranty conditions, he/she must contact DIMSPORT Technical Support Service to obtain information on the exact procedures for returning the product for inspection.

With the limitations specified below, and if conditions exist for recognition of the warranty pursuant to Legislative Decree 206/05, the product will be repaired free of charge for the purchaser.

Without prejudice to the provisions of art. 130 Legislative Decree 206/05, in particular as regards the objective impossibility or excessive cost of the repair.

If the product is returned after expiry of the warranty period or the defect is not covered by the warranty, or the product is free from defects, DIMSPORT S.R.L. will charge the purchaser for transport, administrative and technical costs sustained.

### Product return procedure

---

For any type of repair work on products, the purchaser must contact DIMSPORT Technical Support Service to request the R.M.A. number, notifying in writing, when requesting the R.M.A.:

- Product serial no.
- Fault reported

DIMSPORT Technical Support Service will carry out tests to verify the entity of the problem; this will be followed by an email communication with the R.M.A. number and the specific instructions to be followed.

The R.M.A. number must be indicated in the document accompanying the goods and on the packaging.

---

### Limits on repairs carried out under warranty

The DIMSPORT S.R.L. warranty does not cover defects occurring beyond the term of duration of the warranty, defects that did not exist at the time of delivery of the product, defects resulting from negligent or careless use, incorrect installation or maintenance, incorrect storage and/or conservation, maintenance or technical work carried out by non-authorised personnel, damage due to transport or corrosion, or products whose serial numbers have been altered or cancelled.

Merely by way of example, the following are excluded from the warranty:

- aesthetic damage to the product such as scratches, dents, chips or nicks both to the outer shell and to the display, in addition to damage attributable to knocks and/or dropping
- damage caused by modification of the product or alteration (hardware or software) of it, without the prior written authorisation of DIMSPORT
- defects resulting from accidents, natural calamities or other causes including rain, hail, lightning and fire.

The warranty does not cover damages which are a consequence of current overloads due to the network to which the product is connected or caused by other equipment, systems or components when improperly connected or used without authorisation.

The materials subject to wear (including capacitors, batteries, LCD screens) are specifically excluded from this warranty, unless the wear or damage is attributable to a material or manufacturing defect.

Any breakage of seals or tampering with the product will result in forfeiture of the warranty.

### Technical support beyond the warranty terms

The product is supplied with a warranty of 24 months from the date shown on the invoice/purchase receipt.

If the product manifests operating problems beyond the warranty terms, or the warranty does not apply, the purchaser should contact the Dimsport Technical Support Service in order to agree the procedure for sending said product for repair or inspection.

In the event of repairs carried out not covered by the warranty, the costs for repair, inspection, software updating or any reset will be sustained by the purchaser.

DIMSPORT reserves the right, without prior agreement with the purchaser, not to carry out the repair when product reset or repair uneconomic, taking into account the value of the product and the cost of the work required.

**Repair work not authorised by  
Dimsport – Tampering****ATTENTION**

*The equipment is sold with tamper-proof seals bearing the wording “Warranty void if seal is broken”.*

*Removal of these seals and/or modification of any part of the hardware or software will entail the forfeiture of any warranty provided on the product by these conditions and suspension of performance of the services scheduled by the contract with the user.*

*The purchaser of the product may carry out any work for the replacement of individual parts and/or maintenance/updating only after express written authorisation by the DIMSPORT Technical Support Service.*

**ATTENTION**

*The dongle is paired with the device serial number. It must NEVER be removed or installed on another device, otherwise it will malfunction.*

*In this case the author of said actions may not plead good faith in his/her defence.*

## 1.2 User license, conditions of use and warranty

### Software licence agreement

<b>1. Attention</b>	<hr/> <p>Installation and subsequent use of the software by the User imply acknowledgement and acceptance of the terms and conditions of this Licence Agreement in respect of DIMSPORT S.R.L..</p> <p>Before installing and using the Software, read and understand this Licence Agreement.</p>
<b>2. Purpose</b>	<hr/> <p>This document defines the contents of the Licence granted by DIMSPORT S.R.L. to the User of the Software in the possession of the User who has legitimately acquired it.</p>
<b>3. Indivisibility</b>	<hr/> <p>The Software is licensed as a single unit, even if can be technically separated into its individual components. Under no circumstances may the individual components be extracted for separate use, unless this is expressly permitted in this Licence or by applicable law.</p>
<b>4. Intellectual and industrial property rights</b>	<hr/> <p>All rights concerning the Software and/or the database to which the User is granted access (including, by way of example but not limited to, any image, logo, trademark, photograph, animation, video, audio, music, text, "applet" and update) as well as the graphic layout of the Software itself are the property of DIMSPORT S.R.L. and come under the protection of pertinent Italian and international laws.</p> <p>All documentation provided in analogue or digital form with the Software (including but not limited to: user manuals, instruction guides and operating manuals) is subject to copyright and may not be copied, photographed, reproduced, translated or converted to electronic means, in whole or in part, without the prior written permission of DIMSPORT S.R.L..</p> <p>All rights to the commercial exploitation and use of the Software, to the Data Base and whatsoever accompanies or completes it, not expressly granted to the User herein, shall remain the exclusive property of the Licensor.</p> <p>The use of the Software by the User shall in no way constitute in their favour rights or claims of any kind concerning it.</p> <p>The User shall ensure full cooperation, where needed, in order to ascertain the ownership of the rights of DIMSPORT S.R.L., fulfilling any and all appropriate requirements to ensure its utmost protection.</p> <hr/>



## 5. Software Licence

The Software is consigned to the User as a non-exclusive Licence for Use that can only be transferred within the limits defined below.

The User may use the Software in accordance with the purpose for which it has been produced and sold, in compliance with the recommendations of use and the technical specifications provided by the Licensor, to the extent set forth in this Licence.

The software may be transferred by the User to another person only if accompanied by this Licence Agreement and shall result in the loss, by the transferor, of their right to use the software.

Consequently, each copy of the software in their possession must be immediately removed from any media that is available to the transferor.

The transfer of the software by the User to third parties does not give to the transferee any right of use of services associated with the legitimate use of the software, such as access to the private web area and the technical support provided by DIMSPORT S.R.L.. If the new licensee is interested in benefitting from additional services, it must contact DIMSPORT S.R.L. directly and sustain the corresponding costs of the services on offer.

In addition to the foregoing provisions, it is expressly forbidden for the Licensee to copy, distribute, spread, communicate or make available, for whatever reason, the software or copies thereof or otherwise allow their use by third parties, as well as to disassemble, decompile, decode, perform reverse engineering, alter all or part of the Software, add parts or integrate it into other software, except to the extent expressly permitted under applicable regulations.

## 6. Protection against copies

The Software may contain copy protection technology to prevent unauthorized copying of the Software.

It is illegal to make unauthorized copies of the Software, or circumvent the copy protection technology contained in the Software or to copy, in whole or in part, the contents of the database without the consent of the legitimate holder.

The User declares to be aware of this fact and may not claim good faith in their favour, in the event of violation of these Terms of Use.

If the User has to prepare a backup copy of the Software, this can be requested from DIMSPORT S.R.L. after specifying the reasons.

Any backup copies will remain subject to the same limitations as the original as referred to herein and may be used only and exclusively to recover the original if it is lost or irreparably damaged.

**INFRINGEMENT OF THE LICENCE CONDITIONS AS PER 3, 4, 5 AND 6 WILL RESULT IN IMMEDIATE TERMINATION OF THIS AGREEMENT AND THE SUBSEQUENT FORFEITURE BY THE USER TO ANY RIGHT TO USE THE SOFTWARE.**

---

## 7. Conservation of effects

If one or more parts of this agreement are inconsistent with applicable laws, they shall be deemed void, invalid and/or otherwise ineffective. These Licence conditions, however, will retain their effectiveness between the parties with regards to the parts not invalidated.

---

## 8. Applicable Law, Resolution of Disputes and Place of Jurisdiction

This agreement is governed and regulated by Italian law.

For all matters not expressly provided herein, the provisions of Italian law shall apply.

Any and all disputes arising from the interpretation, execution and validity of the general terms and conditions of this agreement come under the jurisdiction of – unless otherwise provided for by mandatory law – the Court of the place of residence or domicile of the User, should the latter be considered as a "consumer" pursuant to current law, otherwise exclusively through the Court of Vercelli, Italy.

---

## 9. Communication

The Licensor DIMSPORT S.R.L. has head offices in Località San Iorio 8/B, 15020 Serralunga di Crea – Italy.

Any communication or complaints should be sent to that address, or by fax to +39 0142940094 or by e-mail to [info@dimsport.it](mailto:info@dimsport.it).

Communications and complaints sent to other addresses will not be taken into account for the purposes of this Licence agreement.

---

## 10. Language

These general Licence terms and conditions are drafted in Italian and translated into English, French; Spanish, German and Portuguese.

In the event of any discrepancy between the different texts or doubts about their interpretation, the Italian text will take precedence.

---

The Licensee declares having read and understood this Disclaimer in all its parts and agrees to be bound by the terms and conditions set forth herein.

The Licensee also recognizes that this Disclaimer is a complete and exclusive agreement with the Licensor and that it supersedes any prior oral or written agreement, any proposal and/or previous communication on the subject matter of this agreement.

## Terms of use and warranty

Please read the following carefully before starting to use the tools and programs provided by DIMSPORT S.R.L.  
The use shall involve the full comprehension and acceptance of this statement.

DIMSPORT S.R.L. supplies several kits comprising PC software (Race Evo, Flash Point, DS Manager, My Genius Client, Trasdata, Rapid Bike Master, Rapid TPM) and tools (New Genius, My Genius, Trasdata, New Trasdata, Rapid Bike, Rapid) exclusively for race circuit competition purposes.

These tuning kits allow the user to manipulate and alter the engine working parameters. Consequently, the use of these products could make the vehicle not conformed to the official requirements established in your Country for what concerns speed, power level, emission levels. Moreover, it could imply higher or different levels of deterioration of mechanical and electric parts of the vehicle. The use of these products could also determine the decadence of the official warranty supplied by the manufacturer/dealer.

The above mentioned kits supplied by DIMSPORT S.R.L. must be used only after carefully reading the instructions and the technical documentation provided, and only in accordance with what is indicated and suggested therein.

The products provided may allow the user to alter vehicle performance; consequently, the vehicle itself may react differently compared to the standard condition as indicated by the manufacturer.

Maximum caution is therefore required when driving the vehicle after the intervention.

The software and tools provided are designed and manufactured exclusively for sport applications in race circuits.

Under no circumstances should the products be used to infringe or circumvent any national laws in the country of use, on pain of immediate termination of the license agreement.

The user, on acceptance of this license agreement, agrees and declares that any operation performed using the tools and software produced/supplied by DIMSPORT S.R.L. will be carried out on race circuits for competition purposes only, under his own exclusive responsibility.

Except for any specific warranty, conditions or imperative declarations that cannot be excluded or limited by applicable law in the jurisdiction of the user, the Software/Firmware is supplied by DIMSPORT S.R.L. on an "AS IS" basis, defects included. Consequently, it excludes whatever warranty, condition or declaration of any kind expressed, included or envisaged by law, common law or custom including but not limited to the warranties of integration, merchantability, peaceful enjoyment and satisfactory quality, i.e. fitness for purpose.

DIMSPORT S.R.L. shall in no event be liable as regards the User for any loss, damage, claim, or cost, including any indirect or incidental consequential damages, lost profits or lost revenues, damages resulting from business interruption, personal injury or breach of due diligence, or claims of third parties, even if a DIMSPORT S.R.L. representative has been advised of the possibility of such loss, damage, claim or cost.

**The foregoing limitations and exclusions shall apply to the fullest extent permitted by law in the user's jurisdiction.**

**The overall liability of DIMSPORT S.R.L. under or in connection with this Agreement shall also be limited in the event of a material or substantial infringement of this Agreement or an infringement of material or substantial terms thereof.**

## 2 INTRODUCTION

### 2.1 Characteristics

New Genius is the first Touch&Map tool for reading and programming ECU the memories managing vehicle engines.

Its main feature is STAND ALONE operation: it does not require any connection to a PC during reading/programming operations.

This important feature means that New Genius is completely INDEPENDENT from the computer during delicate programming stages, thereby avoiding hazardous crashes or slow performance caused by multi-tasking by the PC's operating system.

Moreover, it is a very easy and user-friendly tool thanks to its practical TOUCH SCREEN.

To ensure the highest safety standards, New Genius has its own battery which – should an accidental disconnection from the OBDII socket occur during programming – immediately resets communication with the ECU - a feature shared by all DIMSPORT-branded serial programming protocols.



## 2.2 Technical specifications

- Ergonomic anti-shock transparent ABS case with strap ensuring a safe grip
- LCD 320 x 240 pixel, TFT colour display with touch panel
- 32 Bit microprocessor with 512 Mbyte internal, protected flash memory
- 256 Mbyte SDRAM memory
- Function LED for Secure Digital, USB, power and diagnostic line
- Internal clock with memory
- Acoustic signals through mini-loudspeaker
- 8.4 volt / 600 mAh internal rechargeable battery
- Supply voltage from 12 to 30 volts
- Communication lines with K LINE, CAN2.0 and J1850 diagnostic socket
- Connection to PC though FULL SPEED USB 2
- Operating temperature and storage between 0°C and 50°C

## 2.3 Kit composition

The New Genius kit box includes all the components for serial programming, supplied to the customer on purchasing New Genius .

There follows the list of all components with their codes.

REF	CODE	DESCRIPTION
1	F32NEWGENIUS	New Genius Console
2	F32GN024	OBDII cable (K-CANBUS- J1850)
3	C32GNALIM12	12 volt 12 Volt 110/240V PSU with international plug
4	F32GN003	Wiring for battery connection
5	C32GNUSB01	USB cable for PC connection
6	C32GNPEN	no.2 TOUCH SCREEN PANEL pens
7	F32GN011	Universal wiring for serial programming
8	C32GNVAL-01	Anti-shock suitcase (picture of the full kit)
9	F32GN067	Security dongle

### NOTICE

New Genius includes optional cables for connections to specific diagnostic ports of CARS, MOTORBIKES, LCV (light commercial vehicles) and HGV (heavy duty trucks)..

They can be purchased as a complete kit or as single items

For more information, refer to the specific documentation or contact your manager directly.







## 2.4 Description of indicator lights and connectors

1. **USB IN:** USB cable connection port for connection to PC.
2. **SD (green LED):** SD card status indicator light.
  - Indicator light ON: SD card inserted
  - Flashing: saving file on SD card
3. **USB (green LED):** USB port-PC communication status indicator light.
  - Flashing: New Genius is communicating with Race EVO



### ATTENTION

***Opening the SD card slot opening or removing/replacing the SD card are forbidden.***

***Any attempt will result in the loss of any guarantee provided on the product and the suspension of any service provided by the contract with the user.***

***Any unauthorized SD Card replacement without express written permission from DIMSPORTTechnical support will be considered as attempts to tamper with the device and violations of current intellectual protection laws and industrial property rights and as such may be notified to competent authorities.***

***In this case the author of said actions may not plead good faith in his/her defence.***

4. **DIAGNOSTIC PORT:** Diagnostic port for serial connection via OBD cable or universal socket.
5. **DC IN:** 12 V PSU connection port (from 110/240 V mains).
6. **DATA:** Interface communication status indicator light.
  - Flashing LED: data transfer in progress.
7. **POWER:** Indicator light for New Genius system power supply status.
  - Indicator light OFF: power supply disconnected
  - Indicator light ON: power supply activated

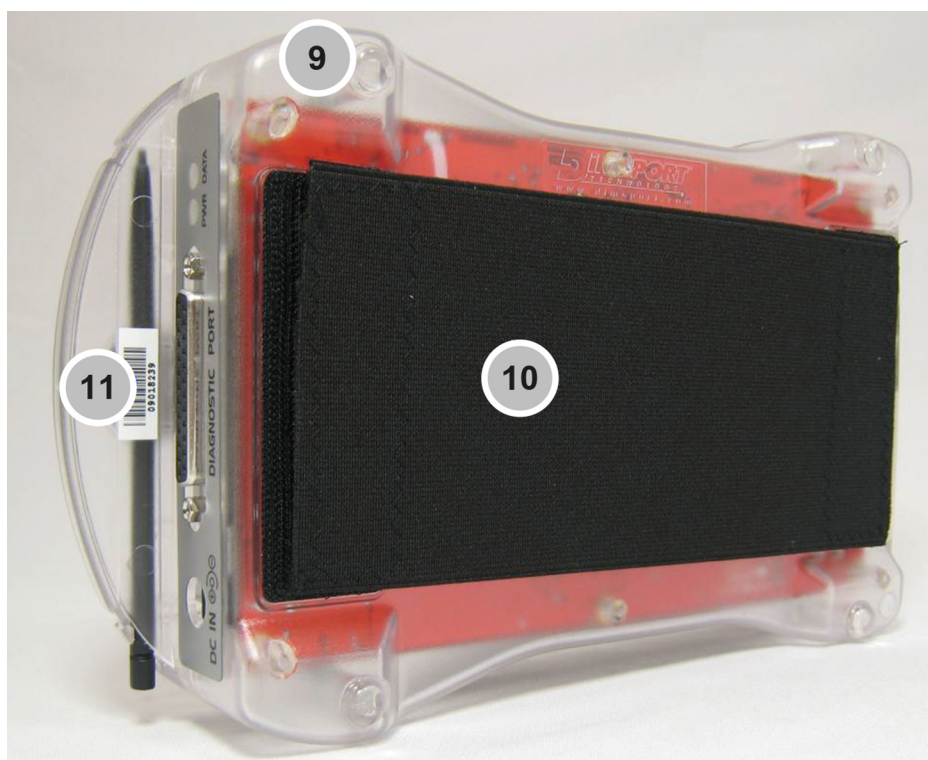


8. **RESET:** Pressing this button resets the device (to be used only after requesting technical support, for example if the device does not respond)



The rear side of New Genius is also equipped with:

- 9. no. 4 non-slip rubber pads
- 10. A removable hand grip for holding New Genius while working
- 11. Label with serial number.



## 2.5 Security Dongle F32GN067



### ATTENTION

*The dongle is paired with the device serial number. It must NEVER be removed or installed on another device, otherwise it will malfunction.*

*Once installed the dongle becomes a fundamental extension of the device.*



The security dongle F32GN067 supplied with the standard kit must be connected to the diagnostic port of the New Genius device and firmly secured by tightening the screws, as shown in the image.

It is possible to use the leads by connecting them directly to the dongle.



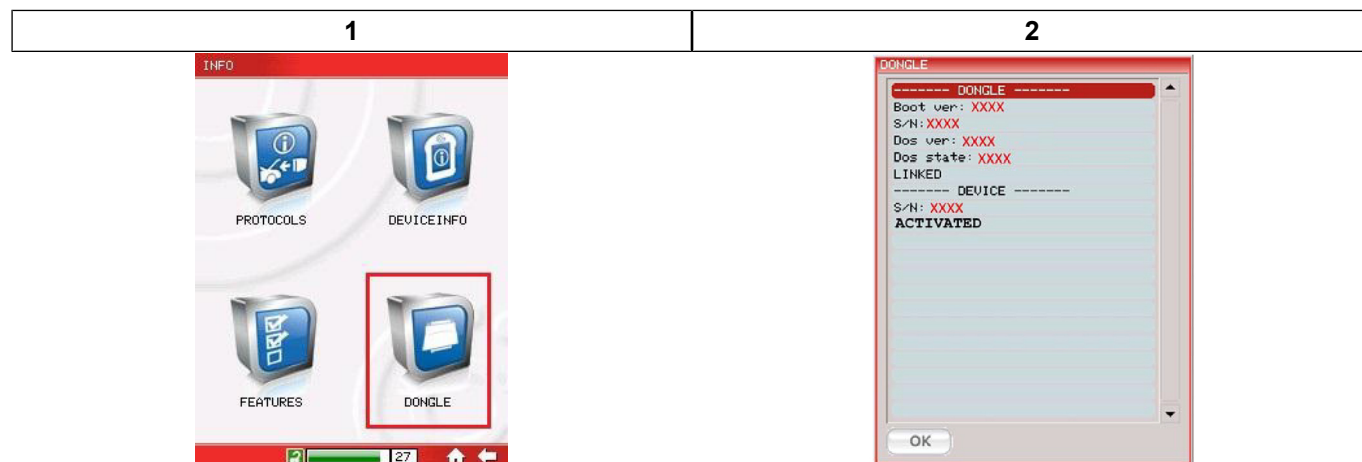
Correct use of the dongle allows the user to obtain:

- updates/upgrades of the serial protocols enabled
- new developments/serial protocols
- RACE technical assistance dedicated to possible serial communication problems with the New Genius unit

The dongle can be used only with GOS version 6.006 onward.



The **INFO** menu displays the new **DONGLE** icon which in turn includes Dongle ID information which is useful for understanding the current status and what the DEVICE New Genius expects.

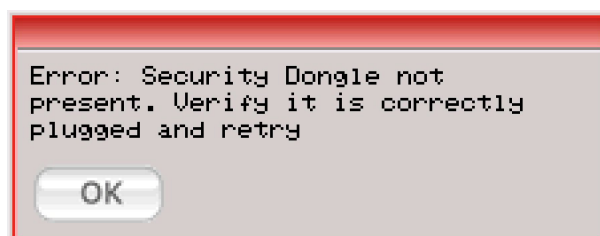


The **LINKED** status in the **DONGLE** field and **ACTIVATED** status in the **DEVICE** field confirm correct coupling between them.

The **TEST - TEST** menu now displays the new **TEST DONGLE** icon needed to verify its correct operation:



If the New Genius device is powered without having connected the dongle, the device is disabled and will go to a *non-configuration* status. The following message will appear on screen:



Should this case happen it will not be possible to use the unit without the dongle connected.

The **WORK** menu will be greyed out and the programming counter set to '0', making any communication operation with the vehicle impossible.

The icons related to the Dongle will also be greyed out.



To reset the instrument's configuration, first of all unplug the power cable, connect the dongle and power the unit up again.

## 2.6 Preliminary operations

Once in possession of the New Genius, the first mandatory operation is to charge it for at least 12 hours to recharge the safety buffer battery.

This operation must be repeated once a month. It is not possible to charge New Genius even after modifying each car by leaving New Genius in Standby.

This procedure is necessary in order to charge the internal buffer battery completely (8.4volt 600 mah); this battery is crucial for data recovery in the event of loss of communication with the ECU.



## 3 PRECAUTIONS FOR CORRECT USE OF FLASH POINT

### 3.1 Introduction

To ensure correct use of the Flash Point system, the computer must comply the minimum requirements and you must take precautions while using the system.

### 3.2 Minimum system requirements

- Intel/AMD Processor (Dual-Core)
- 3 GB RAM
- OS Windows 10 64 bit or higher
- Minimum screen resolution 1600x900
- Maximum Full HD resolution 1920x1080
- 2 USB ports (Type A or C)
- HDD at least 500 GB
- Fast Internet connection

#### NOTICE

Windows on ARM architecture, Mac, Linux systems and virtual machines are not supported.

#### NOTICE

An Internet connection is required to activate the boot, ID, read and write functions of the New Genius system.

### 3.3 The precautions to be followed during read and programming operations with the New Genius tool:

- Always check the status of the vehicle battery; when necessary, connect it to a reliable auxiliary power supply.
- Connection the cables correctly between New Genius and the vehicle, always making sure to connect the cable FIRST to New Genius and only then to the vehicle
- Disable any unnecessary device that may cause energy consumption during communication with the ECU (Radio, air conditioning, internal lights,...).
- Always use the latest version of the New Genius (G.O.S.) operating system.
- Make sure that the New Genius safety battery is fully charged.
- Follow the step-by-step instructions on the New Genius display during use.



#### ATTENTION

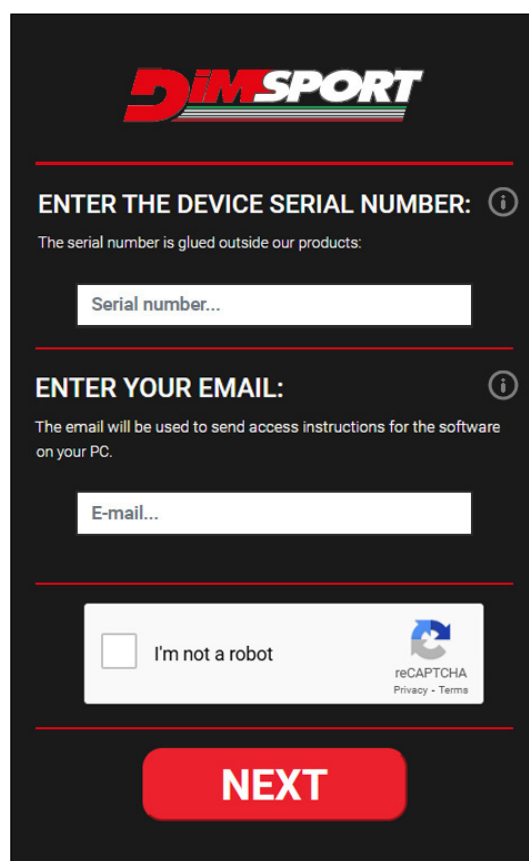
***Failing to comply with the connections provided in the specific manuals may cause malfunctions and/or damage to the ECU.***

## 4 SOFTWARE DOWNLOAD

1. Scan the following QR code using your smartphone:




2. A web page will open in your smartphone browser: fill in the fields with the required data, check the "I'm not a robot" box and press the **Send** button.




The screenshot shows a registration form on a black background with the DIMSPORT logo at the top. The form has three main sections: 1. 'ENTER THE DEVICE SERIAL NUMBER:' with a text input field and a small info icon. Below it, a note says 'The serial number is glued outside our products:'. 2. 'ENTER YOUR EMAIL:' with a text input field and a small info icon. Below it, a note says 'The email will be used to send access instructions for the software on your PC.'. 3. A reCAPTCHA section with a checkbox labeled 'I'm not a robot' and a reCAPTCHA logo. At the bottom is a large red button labeled 'NEXT'.

3. An email will be sent containing the link to download Flash Point.



---



**Flash Point** is the system designed by Dimsport to perform ECU tuning taking advantage of your calibrator Manager experience. Send, receive and program files in complete safety.

[Download setup](#)

[Download FP New Genius manual](#)

[Download FP New Trasdata manual](#)

## 5 SOFTWARE INSTALLATION

### 5.1 Introduction

#### NOTICE

Before starting to work on the car, the most recent setup of Flash Point software must be installed.

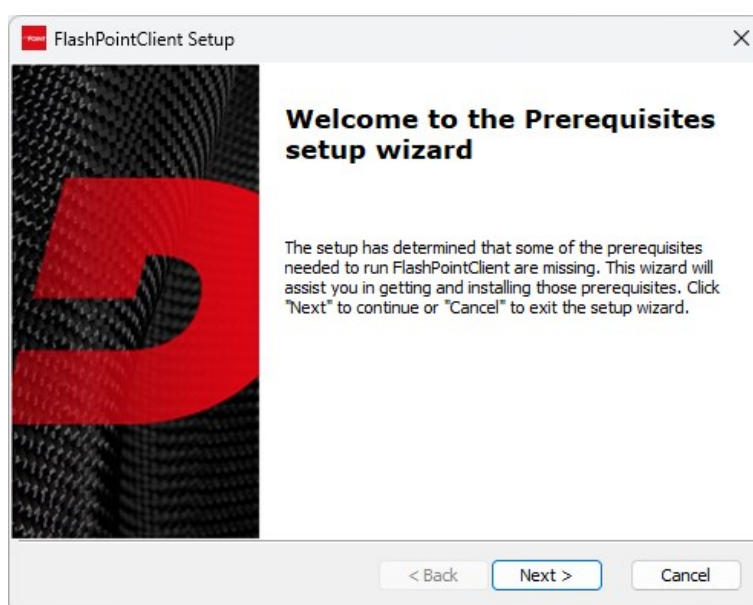
and all the ftp data from your Race- Manager.

The complete installation can be done by follow 3 steps:

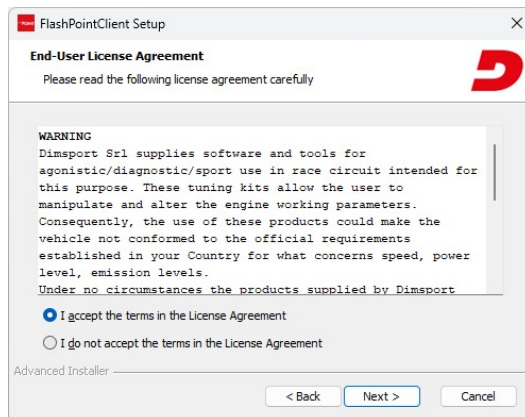
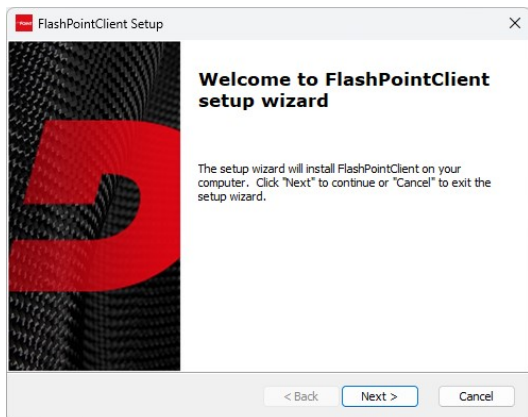
- Ask your Manager for the latest FTP information
- Software Installation Flash Point
- Updating software Flash Point and tool New Genius

### 5.2 Installation procedure


1. Unzip the previously downloaded **FlashPoint\_setup.zip** archive and run the executable file inside.
2. The program will install any missing components that are essential for its operation, and will verify that the PC meets the minimum requirements.



3. Follow the guided procedure and click **Next** when prompted.

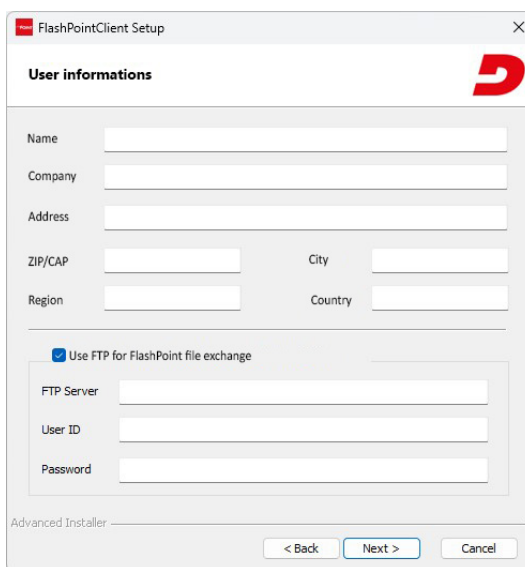


4. Enter your company information here.

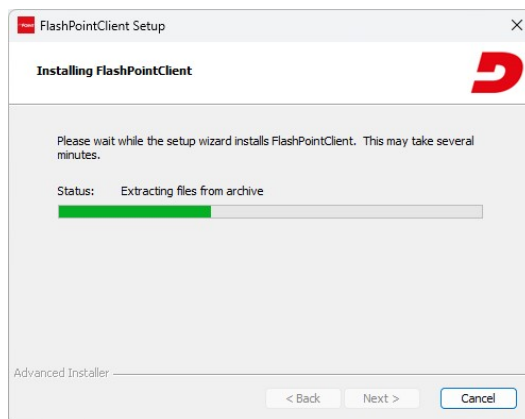
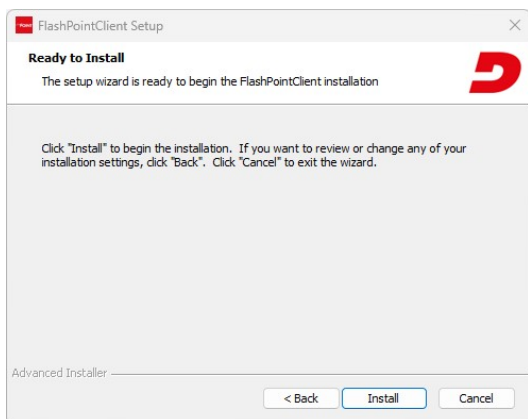

**ATTENTION**

**The FTP service for the file exchange between Manager and Flash Point is automatically enabled upon installing the software.**

**If your Manager uses his/her own FTP, tick the USE FTP FOR FLASHPOINT FILE EXCHANGE option and enter the credentials that the Manager should provide you.**



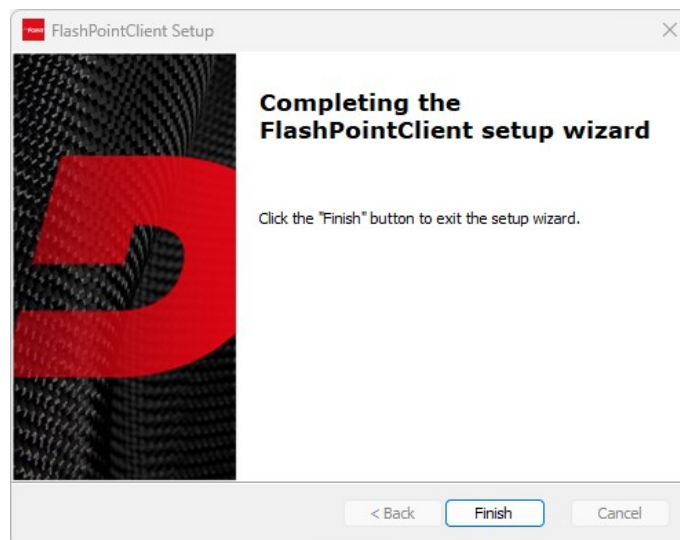
5. Click on the **Install** button.



## NOTICE

The default installation folder for the program is 'C:\Race2000'.

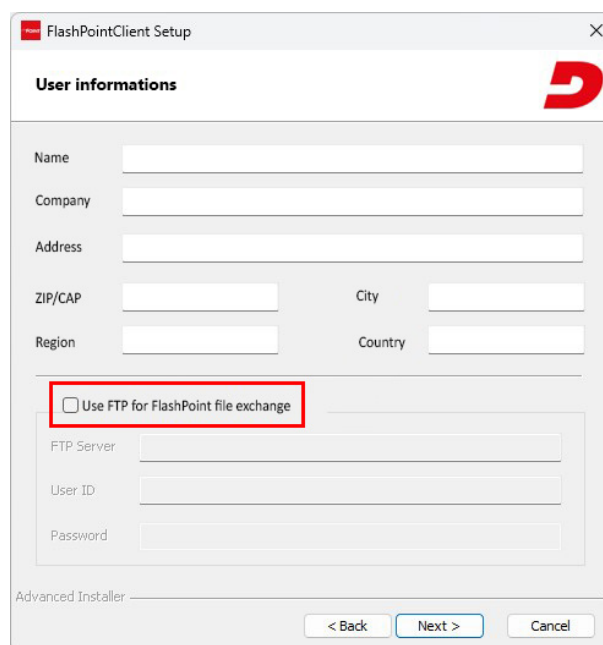
6. This is the confirmation screen of a correct installation.



### 5.3 Flash Point OPEN 2

For Flash Point OPEN2, DO NOT tick the **USE FTP FOR FLASHPOINT FILE EXCHANGE** option.


After connecting New Genius and/or New Trasdata to the PC the system will automatically configure the software for OPEN 2 operations.

A screenshot of the 'FlashPointClient Setup' window, specifically the 'User informations' tab. The title bar says 'FlashPointClient Setup'. The main area has a red 'D' logo in the top right corner. Below the title, there are several input fields: 'Name', 'Company', 'Address', 'ZIP/CAP', 'City', 'Region', and 'Country'. Below these fields, there is a checkbox labeled 'Use FTP for FlashPoint file exchange' which is highlighted with a red rectangle. Below the checkbox, there are three more input fields: 'FTP Server', 'User ID', and 'Password'. At the bottom, there are three buttons: '< Back', 'Next >', and 'Cancel'.

## 5.4 Converting a Flash Point system from normal to OPEN 2.

If the system has been already used in normal configuration and is reconfigured as OPEN 2, the user must first update the software and tools and then modify the file exchange system.

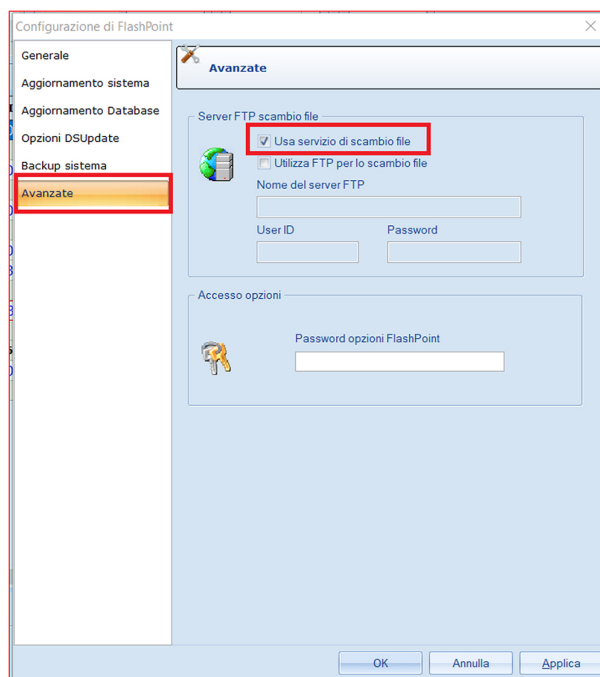
Open the **SHOW - OPTIONS - ADVANCED** MENU (THE password IS **FPSetup**) and clear the tick from the **USE FILE EXCHANGE SERVICE** option as shown in the following image:

 **ATTENTION**

***All the files (ORIGINAL and MODIFIED) previously managed as a normal Flash Point WILL NO LONGER be usable after the reconfiguration to OPEN 2.***

***However, the files will remain displayed in the FILE LIST to continue the correct numbering.***

***Otherwise, it is possible to reinstall the Flash Point software by restarting the numbering from the beginning. In this case, the previous files will be lost.***



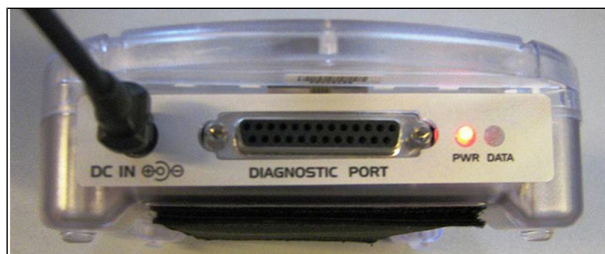


## 6 CONNECTION TO PC

### 6.1 Hardware connection

In order to connect New Genius to the PC, apply the following instructions:

1. Connect the power supply to New Genius and the electricity mains. The PWR LED will come ON.



2. Connect the USB cable to the PC and to New Genius. the USB indicator light will come ON.



## 7 FIRST USE

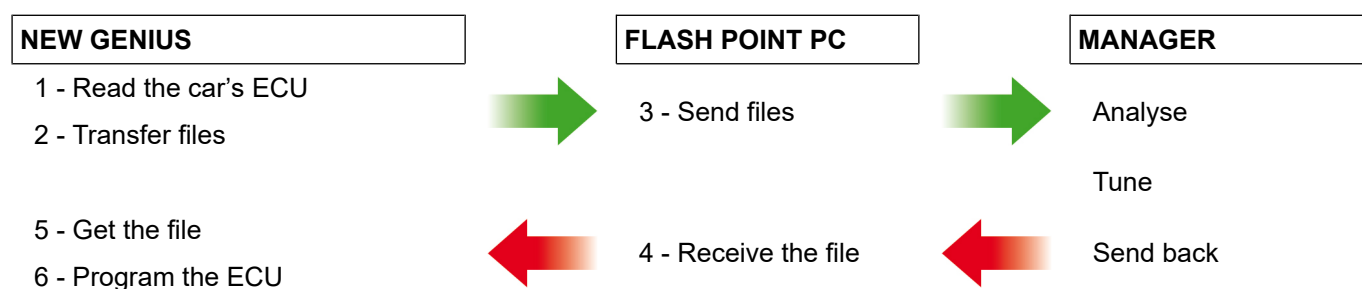
### 7.1 Introduction

Flash Point is part of a network managed and supported by the Race Manager.

A Flash Point client use a system that allows vehicle ECU data to be read (using New Geniusconsoles) and sent, through Internet, to the Race Manager.

The Race Manager analyses the file received, creates a modified file for that specific vehicle and sends it to the Flash Point client.

When the modified file is received by the Flash Point program, it is moved to New Genius and this tool is used again to program the ECU.

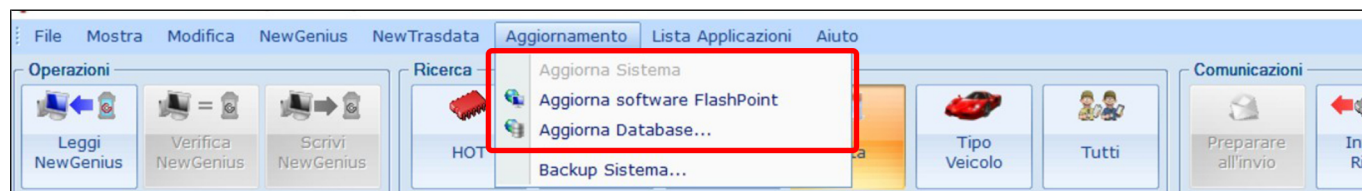


## 7.2 System update

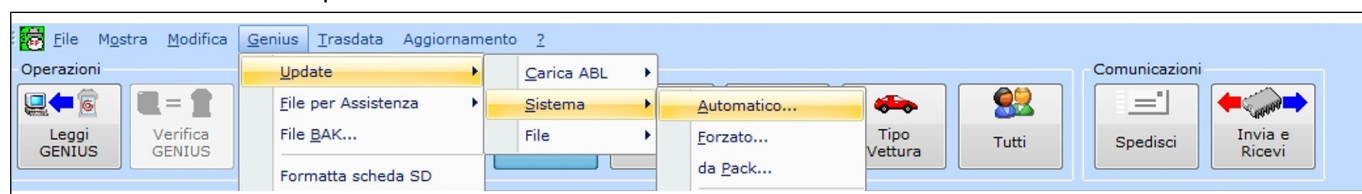
Make sur you have a good internet connection.

Always perform the automatic updates required by the software on start-up.

- **UPDATING - SYSTEM UPDATE** to update the software and the connected device.
- **UPDATING - SOFTWARE UPDATE** to update only Flash Point software.
- **UPDATING - DATABASE UPDATE** to update only the database



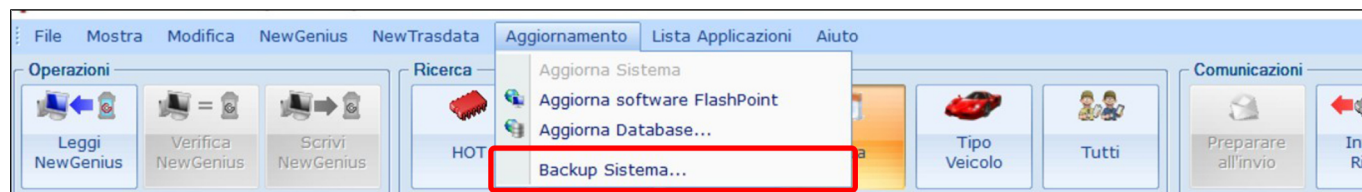
New Genius can also be updated from the menu:



## 7.3 System Backup

- **UPDATING - SYSTEM BACKUP** .. and select the destination folder where the system should save a copy of the database.

After reinstalling the software copy the files to the directory **C:\Race2000**.



## 8 MAIN SCREEN

### 8.1 Introduction

Once New Genius is turned on, the first screen will show:

1. Main menu
2. Counter
3. ABOUT button (with NEW GENIUS info)
4. Date and Time



## 8.2 Main menu

The main menu displays the four main buttons **WORK**, **TOOLS**, **INFO** and **STANDBY** which give access to work sections and information sections:

- **WORK** to intervene on vehicles
- **TOOLS** to view files, settings and tests
- **INFO** to obtain information about New Genius and its protocols
- **STANDBY** to set New Genius in standby mode

For detailed information about individual operations, refer to the chapters indicated for the specific functions.

- **WORK**

The **WORK** button provides access to the main work section through sub-menus that direct us to **IDENTIFICATION**, **READ** and **WRITE** operations.

- **TOOLS**

The **TOOLS** button provides access to display functions for the files loaded on the SD memory through the **EXPLORE SD** function. It is also possible to manage display, language, date and time settings for New Genius using the **SETUP** menu; and run functional **TESTS** on various components such as Ram, Display, Led and Battery.

- **INFO**

The **INFO** function provides all information about New Genius, Protocols and managed Enables.

- **STANDBY**

Pressing the **STANDBY** laces New Genius into standby and energy-saving mode. To restart New Genius, touch the display once.



## 8.3 Counter

The counter was implemented to make sure that the operating system and protocols of New Genius are always up to date. Since this is a constantly evolving tool, this procedure means you the device will always be aligned with the latest version.

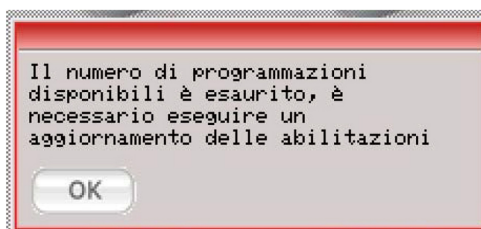
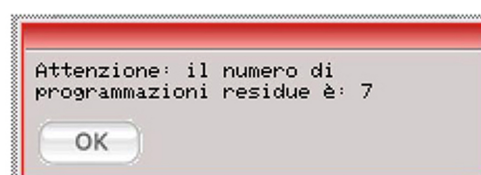
The counter is reset simply by running the instrument update. The basic value is set to 30 programming operations

The coloured counter bar is located at the bottom of the screen.

The alert threshold is set to 10

Below this threshold, after a successful programming operation, the user is reminded of the remaining number of operations.

When the remaining programming operations = 0, New Genius must be updated



## 9 OPERATING PROCEDURES

### 9.1 Reading the ECU

The first step is to connect the instrument New Genius to the car.

To access the Serial Read procedure, apply the following path and make correct selections depending on the vehicle.

**WORK - VEHICLES - BRAND/MODEL/TYPE - PROTOCOL**

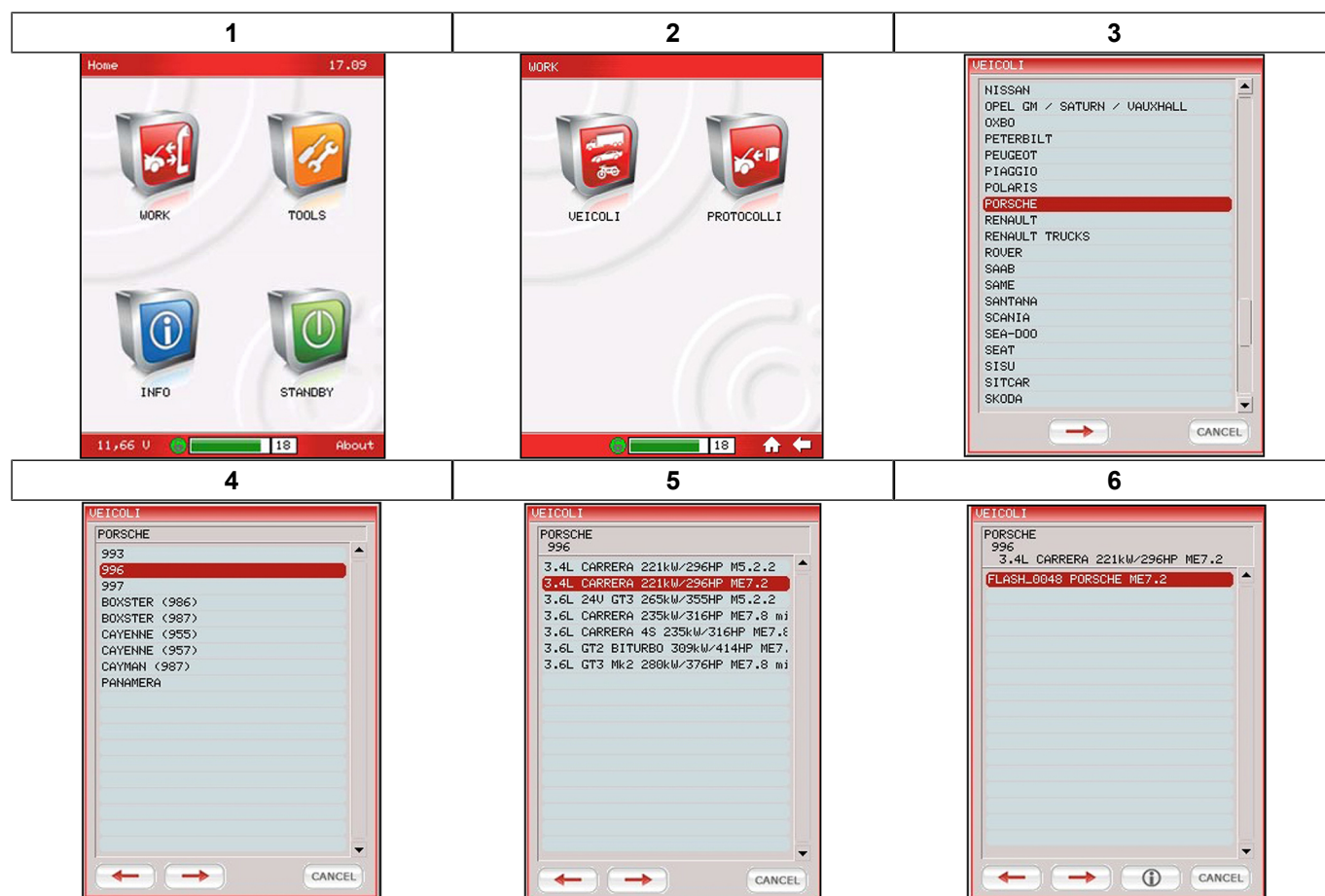
Or, if the user already knows which protocol to use, follow the path

**WORK - PROTOCOLS**

This operation allows car identification and reading:

Follow the following path and select correctly depending on the vehicle in question.

**WORK - VEHICLES - BRAND/MODEL/TYPE - PROTOCOL**



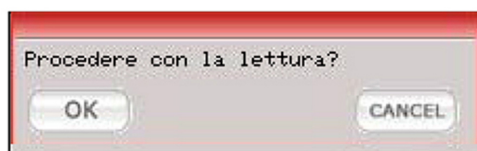
Once the protocol is opened, it will be possible to select **READ**



1. Click on **READ**



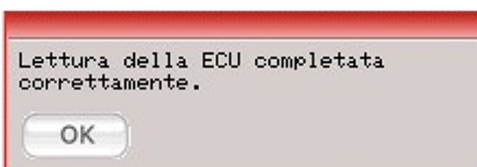
2. After the ID is displayed, New Genius requests the ignition to be switched OFF and ON again (this procedure is required to verify data).



A window is displayed showing the progress of the read operation and an estimate of the time remaining.



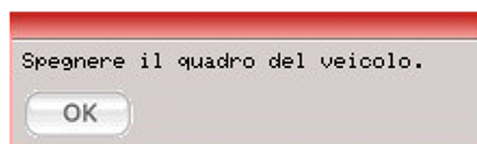
3. At the end of the read operation, will be possible to save the file in the SD card of New Genius.



4. Then follow the instructions to complete the read operation.

5. After completing the read operation, the file read must be uploaded to the PC.

6. After completing the read operation, it will be possible to save the file in the vehicle ECU.



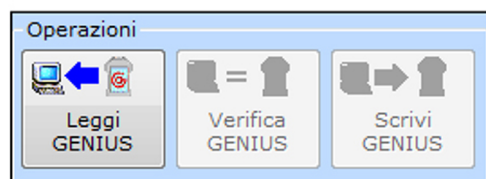


## 9.2 Transfer a file from New Genius to Flash Point PC

Connect the New Genius to the power supply and the USB cable to the PC.

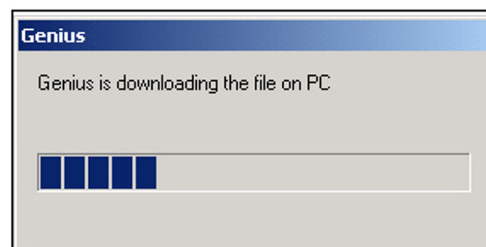
Run the Flash Point software.

Click **READ GENIUS** at top left of the window.



The program asks to double check if New Genius is correctly connected to the USB port and has to be on the MAIN menu.

If the entire procedure is correct, New Genius starts transferring data to the PC.



Once the necessary files have been downloaded by the PC, the following window appears.

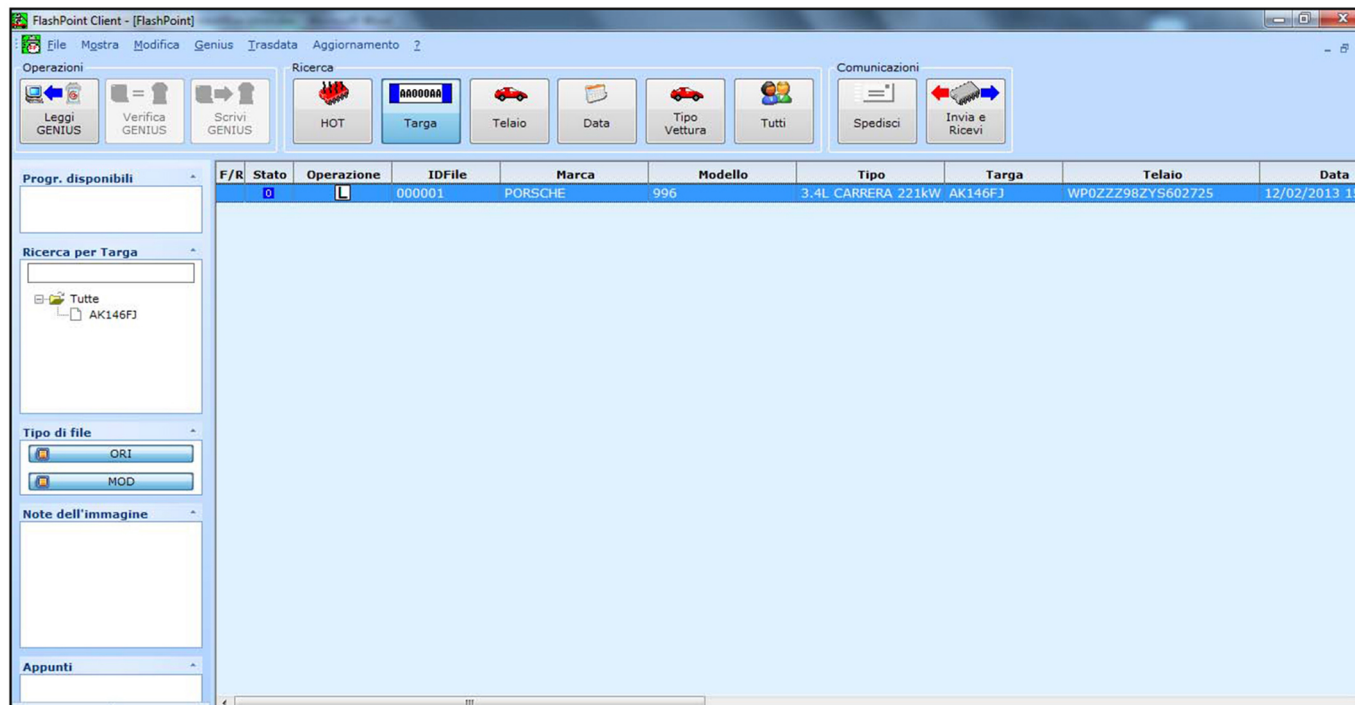
If the data entered is incorrect, Flash Point may encounter problems when programming modified files in the vehicle's ECU. Problems may arise for future programming of the original file as well.

## 9.3 Sending a file to your Manager

The exchange of files between the Flash Point Client and Race manager is easy and quick over Internet.

The following instructions explain how to send the Race Manager the files read from the vehicle with New Genius.

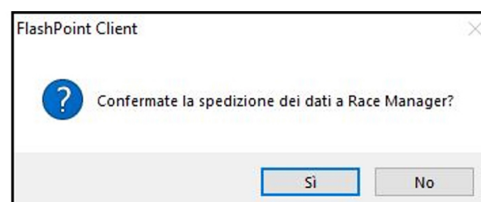
1. Select the files to send to the Race Manager (more than one file can be selected)



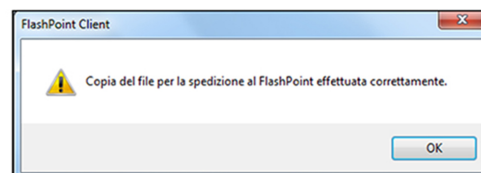
2. Click **SEND** at top right in the window.



3. Click **YES** to confirm sending the to the Race Manager.



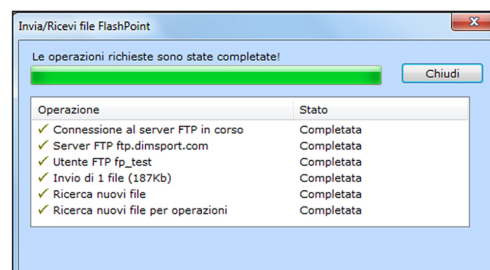
4. Click **OK** when the following message appears.



5. Make sure that the computer is connected to the Internet and click **SEND AND RECEIVE** to make a connection with the FTP server and send the file.



6. When all scheduled operations have been completed, click **CLOSE**.



Inform the Manager that the file has been sent.

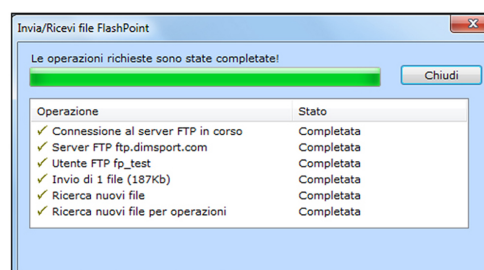
The Manager will prepare a specific modified file for the vehicle in question that will be sent back.

## 9.4 Receiving the modified file form your Manager

Once the file modified by the Manager has been created, it is returned via procedure similar to previous descriptions.

To receive the modified file for the ECU, simply press the **SEND AND RECEIVE** button again and wait for the operations to be completed.

Check that at least **1 FILE RECEIVED** is in the operations box.



## 9.5 Transfer a file from Flash Point PC to New Genius

Once the modified file created by the Race Manager has been received, it will appear in the list.

The next window shows the list of files with **STATUS** information:

**M**: Modified file

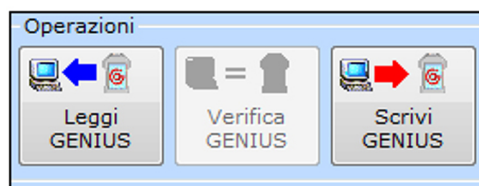
**R**: File just received

**In bold**: items for files to be written



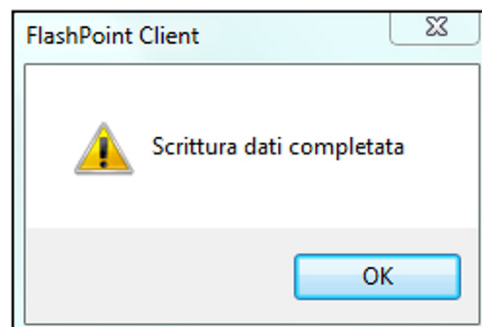
Progr. disponibili	F/R	Stato	Operazione	IDFile	Marca	Modello	Tipo	Targa	Telaio	Data
	<b>M</b>	<b>R</b>		000001	PORSCHE	996	3.4L CARRERA 221kW	AK146FJ	WP0ZZZ98ZYS602725	12/02/2013 16:
	<b>O</b>	<b>S</b>		000001	PORSCHE	996	3.4L CARRERA 221kW	AK146FJ	WP0ZZZ98ZYS602725	12/02/2013 16:

Click on the file marked with **M** to select it and then click on **WRITE GENIUS**.



When uploading operations are complete, click **OK** to confirm.

The sequence with the PC is now completed;

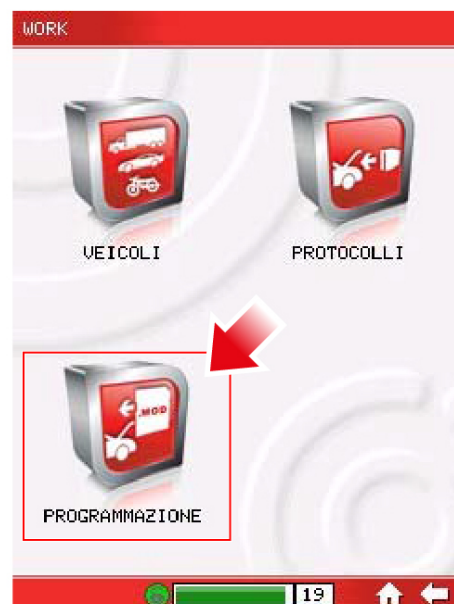


New Genius is ready to be connected to the vehicle and program the file.

## 9.6 Serial Write

After transferring the modified file to New Genius, it will be possible to write the file in the vehicle ECU. The **PROGRAMMING** button will appear in the menu.

To access the Serial Write procedure, follow this path  
**WORK - PROGRAMMING**



1. Press OK to start the write procedure.

### NOTICE

Make sure that the vehicle has a stable additional power supply before switching the panel on.

1	2
<p>ATTENZIONE! Per il corretto funzionamento del protocollo è necessario collegare un caricabatterie stabilizzato alla batteria del veicolo</p> <p>OK</p>	<p>Accendere il quadro del veicolo, controllare le connessioni e premere OK per proseguire.</p> <p>OK CANCEL</p>

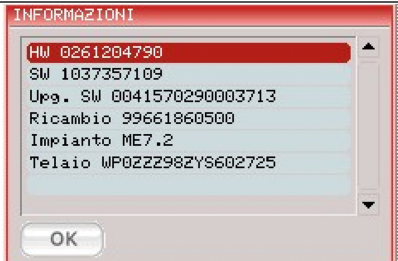
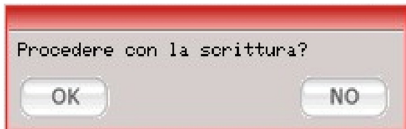
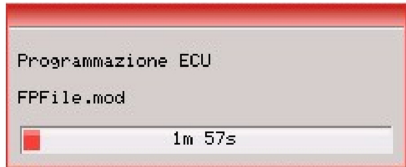


2. Once you have started the procedure, ECU identification numbers will be read and displayed again.  
If the data match, continue by clicking **OK**.

### NOTICE

If the displayed data does not match the hardware number and/or software number, note the displayed numbers, press **CANCEL** and search for the corresponding setting file.

3. If confirmed, ECU programming is started and the progress of the process can be monitored.

1	2	3
		



### ATTENTION

*During this procedure, do not perform any action on the vehicle or on New Genius*

4. A message window will confirm the end of the procedure and another will request the panel to be disconnected.
5. Press '**OK**'.
6. Programming is now complete.

1	2
	

It is recommended to wait for 15-20 seconds before switching the panel ON again and then 15-20 seconds before switching the engine ON; This allows for the ECU to reset.

## 9.7 Patch Unlock and writing via OBD with New Genius

For ECU models that can be flashed through OBD (only after having been unlocked with the PATCH function), proceed as described below:

1. Send your manager both files New Genius marked as **O** and **OP**
2. Identify the vehicle with New Genius by using the specific communication protocol (for protocols that allow reading, it is possible to send to the Manager the file read via OBD but only after unlocking the ECU with New Genius).

Check the application list.

3. Download the ID file from New Genius to Flash Point software. The file will appear in the list marked as shown in the following image.



4. Send the ID file to your manager

5. When the MOD file is received and the swap file operation is performed using the **SEND/RECEIVE** button, the grid will now display the modified file and the ID file icon will change from **I** to **IO** as shown in the following image:



Refer to the key for the icons (**HELP - LEGEND...**)

6. Load the **M** file on to New Genius to reprogram the vehicle
7. Use the **IO** file to reprogram the original file in the vehicle's ECU with New Genius.

## 9.8 Special Tools

Depending on the characteristics of the protocol, several different special functions may be available.

### 9.8.1 Cancelling errors

After having programmed several ECUs, it may arise that fault indicator lights come ON.

This is why some serial protocols (such as FLASH\_0082 for VAG ME7.1.1 ECUs) the trouble-shooting and error cancellation function has been made available.

To execute this operation, follow this procedure:

1. Open the FLASH protocol that supports this function in one of the following ways:
  - **WORK - VEHICLES - CORRECT VEHICLE SELECTION**
  - **WORK - PROTOCOLS - FLASH PROTOCOL SELECTION** (with error cancellation function)
2. Select the **TOOL** button.
3. Execute error cancellation by clicking on the button **DEL. ERRORS**
4. Follow the panel on/off instructions



### 9.8.2 Injector code read/write

Refer to [APPENDIX 'B' \(SPECIAL PROCEDURES – INJECTOR CODES\)](#) for details.

### 9.8.3 Counter read/reset

Refer to [APPENDIX C \(VAG COUNTER RESET\)](#) for details.

## 9.8.4 Screwdriver

This button opens the transmission parameters Setup window pertinent to the selected serial Protocol, thereby making it possible to modulate the K-line transmission for the specific Protocol in question.

This option is active only for some protocols and is aimed at solving a particular communication problem in some cars.



### NOTICE

These modification options must only be used under instructions from Technical Support.

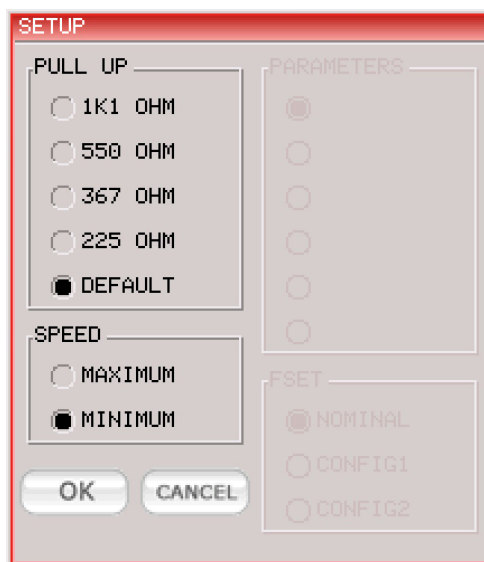
### PULL UP

The **PULL UP** option is used to set the resistance on the K-Line. On opening the menu, New Genius will be set with the default value. Select a different item if necessary.

### SPEED

The **SPEED** option makes it possible to vary the serial protocol transmission speed.

It is possible to identify which speed is currently set for the protocol in use (normally set to maximum) and modify it if necessary. Bear in mind that lower speeds involve longer times but more reliable read/write operations.



### ATTENTION

*The three settings are reset to default values every time the protocol menu is closed.*



## 10 OPERATIONS FOR FLASH POINT OPEN 2

### 10.1 Sending a file to your Manager

The OPEN 2 version of the Flash Pointsystem differs from the routine one for the way in which files are swapped with the Manager.

The **PREPARE TO SEND** and **send and receive** buttons are replaced by **OUT** and **IN** buttons.

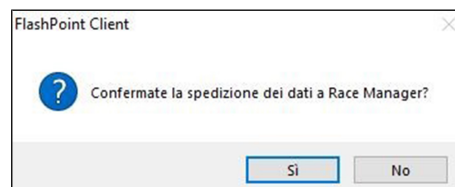
Select the ORI file from the file list.

Stato	Operazione	Clona	IDFile	Marca	Modello	Tipo
			000002	VOLKSWAGEN	GOLF 6	2.0L 16V TDI 103kW/
			000002	VOLKSWAGEN	GOLF 6	2.0L 16V TDI

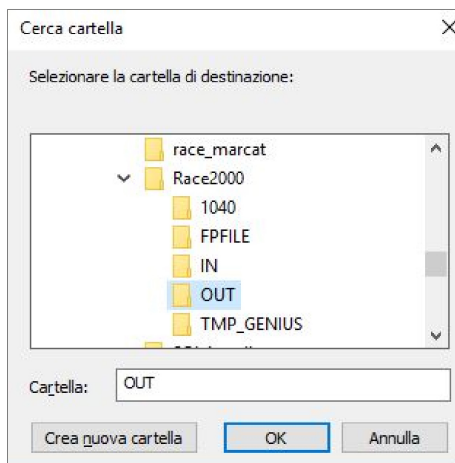
Press the **OUT** button.



Confirm the operation.



The system will display then a window showing the folder where the file is saved to by default:



Press **OK**.



Open the folder indicated in the message (**C:\RACE2000\OUT**) and extract the **.FPF** file.

### NOTICE

The **FPF** file is encrypted and must not be opened.

You can send the file to the Manager by attaching it to an e-mail or by using other means.

## 10.2 Receiving and loading the modified file to/from your Manager

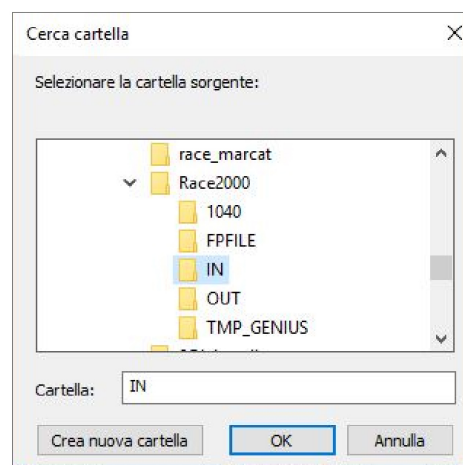
The modified file that the Flash Point client receives from his/her Manager and also encrypted and has the extension **.FPF**.

Save the file in the default folder "**C:\RACE2000\IN**".

Then press the button "**IN**" in the software.







The next window will show the default folder "**IN**".





Press **OK** and the modified file will appear in the file list.

Stato	Operazione	Clona	IDFile	Marca	Modello	Tipo
			000002	VOLKSWAGEN	GOLF 6	2.0L 16V TDI 103kW/
			000002	VOLKSWAGEN	GOLF 6	2.0L 16V TDI

Select the MOD file and press the "**WRITENew Genius**.button.

 **ATTENTION**  
  
*If the protocol used does not support read but only IDENTIFICATION functions, a record with the following icons will be displayed in the file list:*



The send procedure remains unchanged.

The procedure for receiving the MOD file, on the other hand, requires the Manager to send two **FPF** files to the client: one containing the modified file and one containing the original file the Manager used to develop the modified file that will allow original vehicle data to be written if needed.

The client must save both **FPF** files in the **C:\Race2000\IN** folder.

After pressing the **IN** button in the software, the files will appear in the list as follows:



## 10.3 Deleting a file

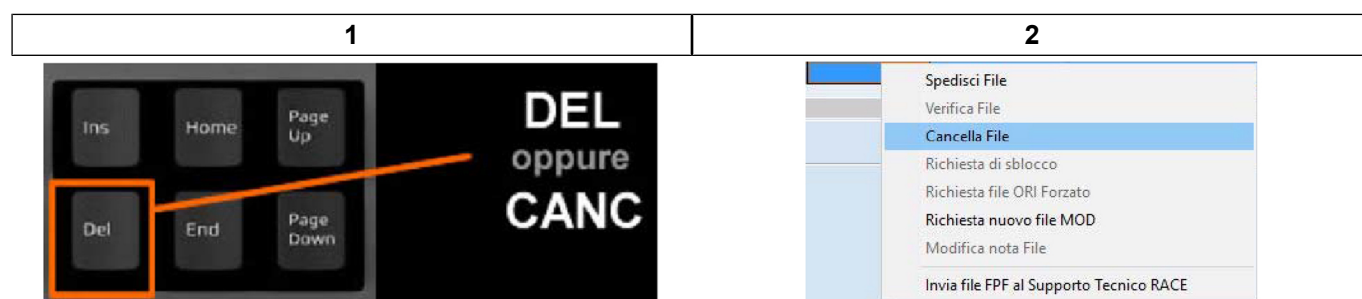
The files in the Flash Point software file list cannot be delete directly by the client. In case there is the need to delete one or more files from the list the client must send a request to the Manager.

The operating procedure is indicated below:

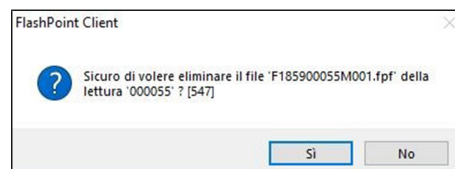
1. Select the file to delete:



2. Press the **CANC/DEL** key or the **DELETE FILE** command in the **MODIFY** menu:



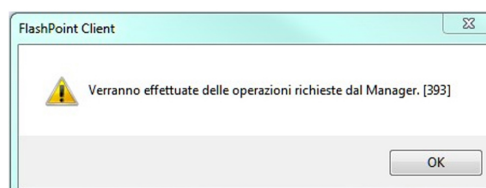
3. Confirm the operation.



4. If the operation is successful, the program will create an **.FPF** file.



5. Send the **.FPF** file as explained in paragraph [Sending a file to your Manager](#)
6. The Manager will send a new **.FPF** file that the client must upload to the software using the same procedure explained in paragraph [Receiving and loading the modified file to/from your Manager](#).
7. The software will confirm the operation by displaying this message:
8. At the end of these operations, the file will be deleted from the list.



## 10.4 Other special operations

There are other special operations that can be requested to the Manager through the **MODIFY** menu:

- Unlock request (to re-use an already written MOD file)
- Forced ORI file request (Recovery file)
- New MOD file request

After selecting and confirming one of these operations, the program proceeds to create an **.FPF** file that must be sent to the Manager using the same procedure seen in the previous paragraphs.

Recapping:

1. Select the desired operation and confirm it
2. Creating the **.FPF** file
3. Extracting the file from the **OUT** folder
4. Send to Manager
5. Receiving the **.FPF** file
6. Saving the **.FPF** file in the **IN** folder
7. Press the **IN** button in the software
8. The software activates the required operation

# 11 TOOL MENU

## 11.1 Introduction

This menu has a number of additional tool functions.

From the **MAIN MENU** of New Genius, select **TOOL** to open a number of sub-menus with the classic tree system.



The structure is shown below

### TOOLS

- SET UP
  - Screen
    - Touch Panel
    - Illumination
    - Colours
  - Language
  - Date & Time
- TEST
  - Display
  - LEDs
  - Battery
  - SD
  - Dongle (NEW)

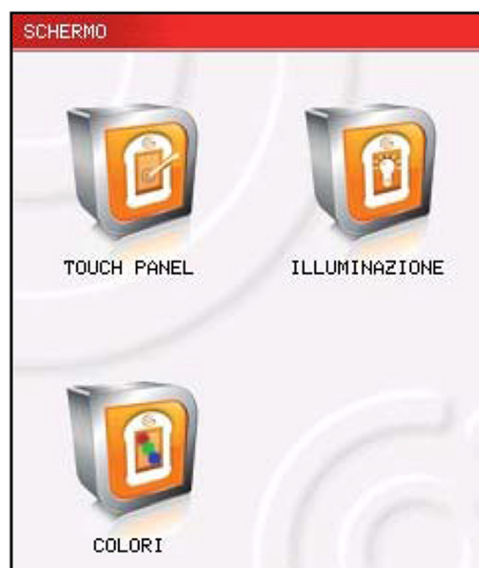
## 11.2 Set Up

The Setup menu manages the settings of New Genius as well as the ability to change screen, language, date and time settings.



## 11.2.1 Screen

On entering this section, it is possible to calibrate and modify the display settings of New Genius :

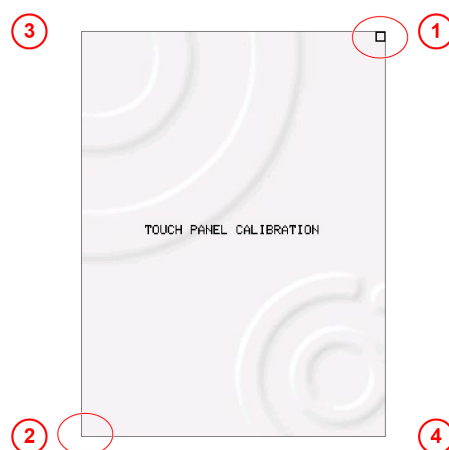


**Touch Panel:** activates the Touch Panel calibration procedure. The procedure requires touching (with the stylus supplied) the four corners of the Touch Screen in the order indicated by the small square.



### ATTENTION

*This operation must be performed rather precisely; Click fully in the middle of the squares and, if you make a mistake, the sequence can be started again from the beginning.*



**Illumination** is used to choose the intensity and duration of illumination before going to standby.

Move the bar to the left to lower illumination intensity. Click on the up and down arrows to change the backlight switch OFF time.





**Colour:** is used to change the colour of the menu of New Genius. It is possible to choose between Blue, Red and Green.



### 11.2.2 Language

On entering the Language section, you can choose which language to set for New Genius .

The following languages are available :

- English
- Italian
- Spanish
- German
- French
- Portuguese
- Hungarian



### 11.2.3 Date & Time

On entering the **DATE & TIME** section, you can change the day, month, year and time of New Genius .

The display format is:

HOURL – MINUTES – SECONDS

DAY – MONTH – YEAR

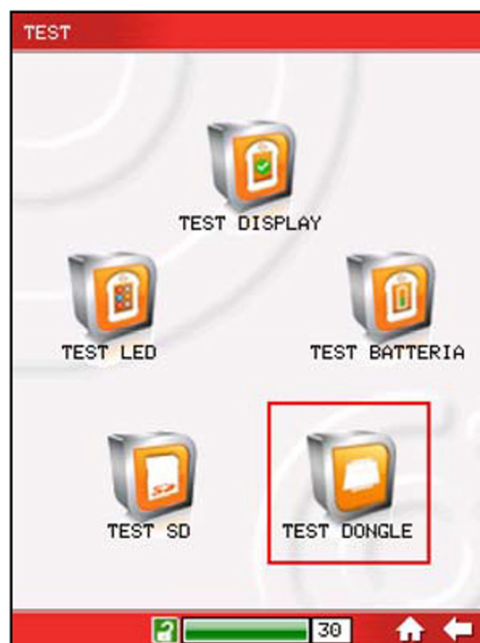


## 11.3 Test

The **TEST** menu is used to perform a series of tests on the various components of New Genius to verify its integrity and correct operation.

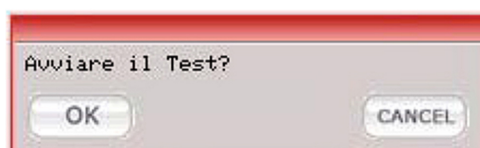
This function is used to check the Ram, Display, LEDs and internal battery of New Genius.

- Test Display
- Test LED
- Test Battery
- Test SD
- Test Dongle (see [Security Dongle F32GN067](#))



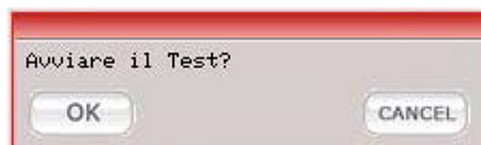
### 11.3.1 Test Display

Use this function to check the status of LCD display;  
Press OK to start the test; All pixels will be turned on.



### 11.3.2 LED Test

Use this function to check the operation of various LEDs;  
Press OK to start the test; All the LEDs will flash (USB, SD, DATA).



### 11.3.3 Battery Test

Use this function to check the operation the internal back-up battery;  
Follow the instructions and press **OK**.

1	2	3
		

If the battery is charged and in good condition, at least 8,0 Volt should be displayed.  
If it is less than 8,0 Volt, leave New Genius on charge for at least 8-10 hours then try again.

### 11.3.4 SD Card Test

This section has the New Genius RAM memory and SD memory.test



## 12 WIRING LIST AND COMPOSITION

The complete list of connections and wiring to be connected to each vehicle (with related codes and instructions) is available in the Flash Point program..

From the menu, select **HELP - SERIAL PROTOCOL INFO - DOCUMENTS**.

The **DOCUMENTS** button will open a PDF file with specific instructions for the vehicle/ECU in question:

An electricity connection is required to create the connection to the vehicle, information about the OBDII/diagnostic socket, specific notes or possible situations that may arise.

### NOTICE

This section is useful if communication problems or errors arise during serial operations.

## 13 APPENDIX 'A' (SPECIAL PROCEDURES – VERIFICATION)

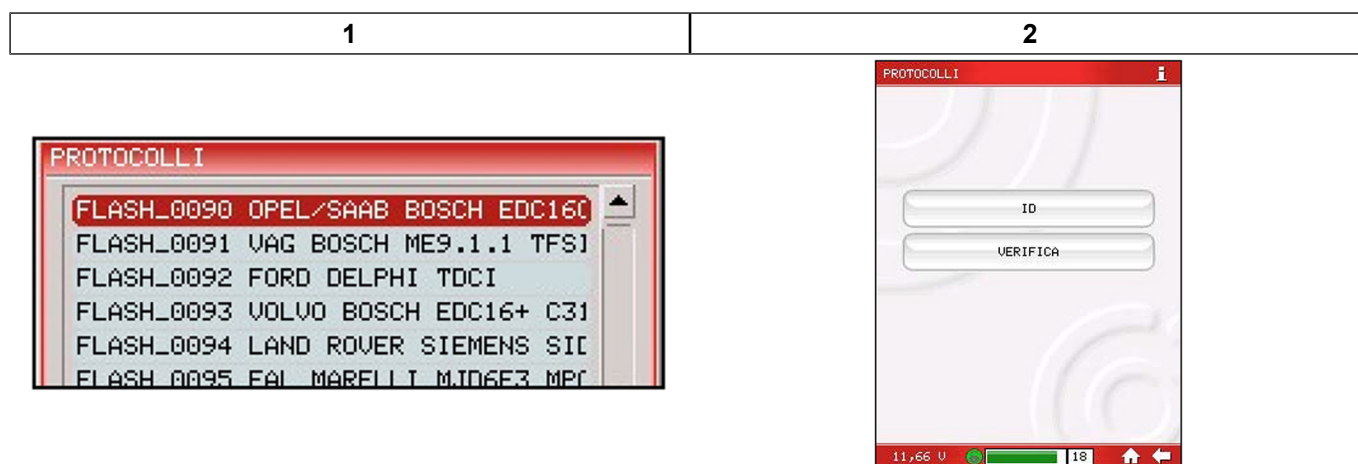
This additional function is available for certain protocols in order to resolve specific situations.

For example, the FLASH\_0090 protocol for OPEL BOSCH EDC16 ECUs does not allow the original file to be read from the ECU. However, the verification procedure will confirm whether the original setting file is fully compatible with the car in question.

On the other hand, for FLASH\_0056 for FAL BOSCH EDC16 ECUs, this function allows us at a certain point to skip the read procedure (which is very long).

It is important to read and follow the procedure here described:

1. Run the ID (identification) for the software stored in the ECU stock.
  - **WORK - VEHICLES - SELECT CORRECT VEHICLE (BRAND - MODEL - TYPE)**
  - **WORK - PROTOCOLS - SELECT PROTOCOL**
2. Click the **ID** button.



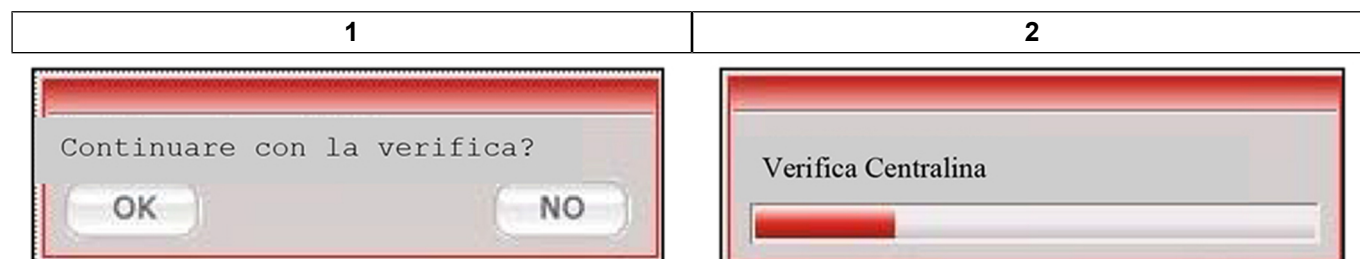
3. Transfer the file from the instrumentNew Genius to Flash Point software
4. Send the **ID** to the Manager

The Manager will return the **Original file** to be verified against file stored in the ECU.

5. Run the ID (identification) for the software stored in the ECU stock.
6. Click the **VERIFICATION** button.

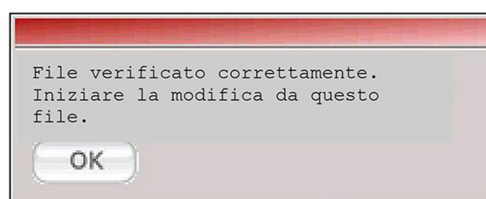
At this point, the panel ON-OFF messages will appear.

Follow the instructions carefully and select the **OK** button until the verification procedure is complete.



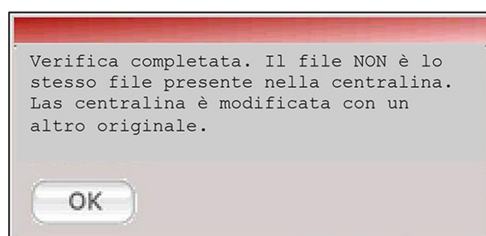
If the verification procedure is successful, New Genius displays an appropriate message indicating that the modification can be performed starting from the verified original file.

The user can confirm the result with the Manager, who will send a corrected and modified file for the vehicle.



If, on the contrary, the verification procedure is not confirmed, the tested file is not compatible with the ECU.

Contact the Manager who will send a new file in order to repeat the verification, or find an alternative way to read the actual file in the ECU.






## 14 APPENDIX 'B' (SPECIAL PROCEDURES – INJECTOR CODES)

In some protocols (such as FLASH\_0071, 0086, 0144 for Renault and Nissan diesel engines with BOSCH EDC16C0/C3 ECUs), this function has been implemented in order to overcome injector code problems after modifying the control unit.

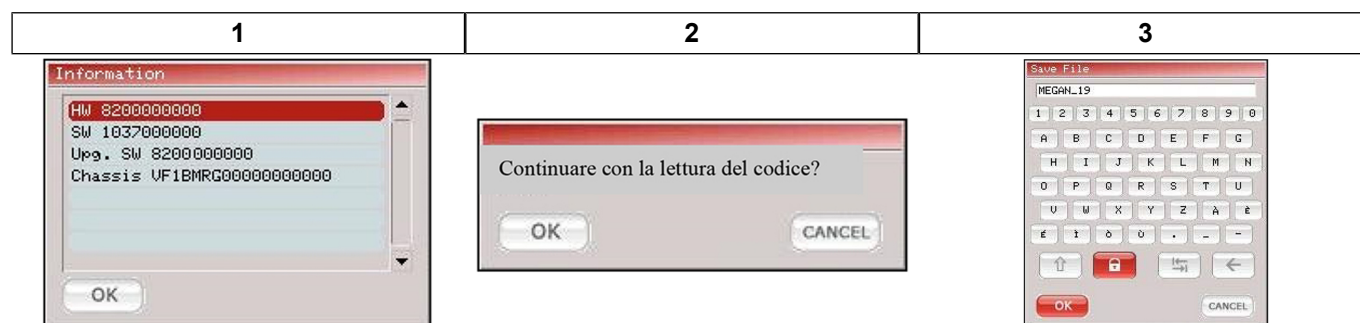
To perform modification work on the ECUs correctly, it is mandatory to read the injectors before each modification and implement the serial connection (read and write in the ECU) **with the engine cold**.

You must also carefully follow the procedure below:

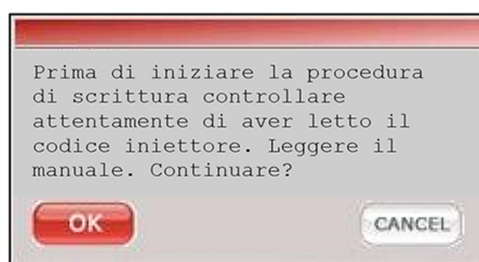
1. The first operation to perform after connecting New Genius to the OBDII socket is to read the injector codes. and open the required protocol in one of the following ways:
  - **WORK - VEHICLES - CORRECT VEHICLE SELECTION**
  - **WORK - PROTOCOLS - SELECT PROTOCOL**
2. Select the **TOOL** button and **READ** the injector code.

1	2	3
		

3. A window will display ECU information and continue the read operation.  
Then you will have to save the code file with a name.



4. After reading the injector code, it is possible to continue with the standard procedures. Inasmuch, read the ECU file and send it to the Manager.
5. After receiving the modified file from the Manager, you can transfer the file to the New Genius tool.  
After selecting the modified file to write, a message will appear:

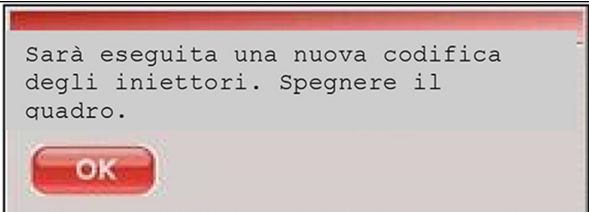
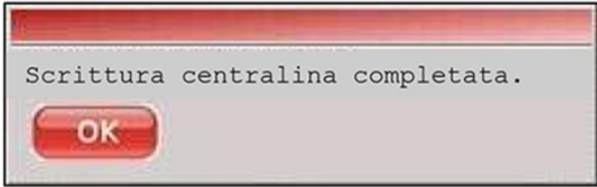


## ATTENTION

***If the injector codes have not been read before attempting to perform the write operation, the user must click CANCEL and do so following the instructions from point 1 described above.***

***If the injector codes have been read, you can click OK to continue.***

6. If the injector codes have already been read, carefully follow the panel ON-OFF messages as requested. New Genius will write the ECU file and then write the injector codes. .

1	2
	



## ATTENTION

*In the unlikely event that communication is interrupted or an operation occurs that prevents correct automatic writing of the injector code by New Genius, the vehicle might not start or if it does start it does so in RECOVERY mode. In this case, manual writing of injector codes is required, following this procedure.*

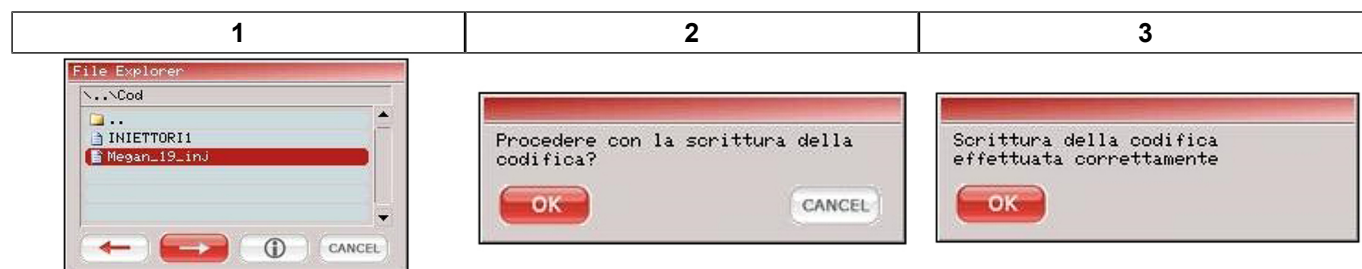
To write the injector codes manually, follow this procedure:

- Open the car protocol in one of the following ways:
  - WORK - VEHICLES - CORRECT VEHICLE SELECTION**
  - WORK - PROTOCOLS - SELECT PROTOCOL**
- Select the **TOOL** button and run **INJECTOR CODING**.



3. At this point, you will be prompted to select the injector coding file previously saved in the **COD** folder. If you are not sure which file to write, you can check for the correct file by pressing the **I (INFORMATION)** button and checking the ID or chassis numbers.
4. Proceed by clicking THE **FORWARDS ARROW** and **OK**.

Once the injector code write procedure is completed, a confirmation message will be displayed.



## 15 APPENDIX C (VAG COUNTER RESET)

**VAG COUNTER RESET** provides the possibility to read and reset the counter of programming operation performed on the ECU via the diagnostic socket.

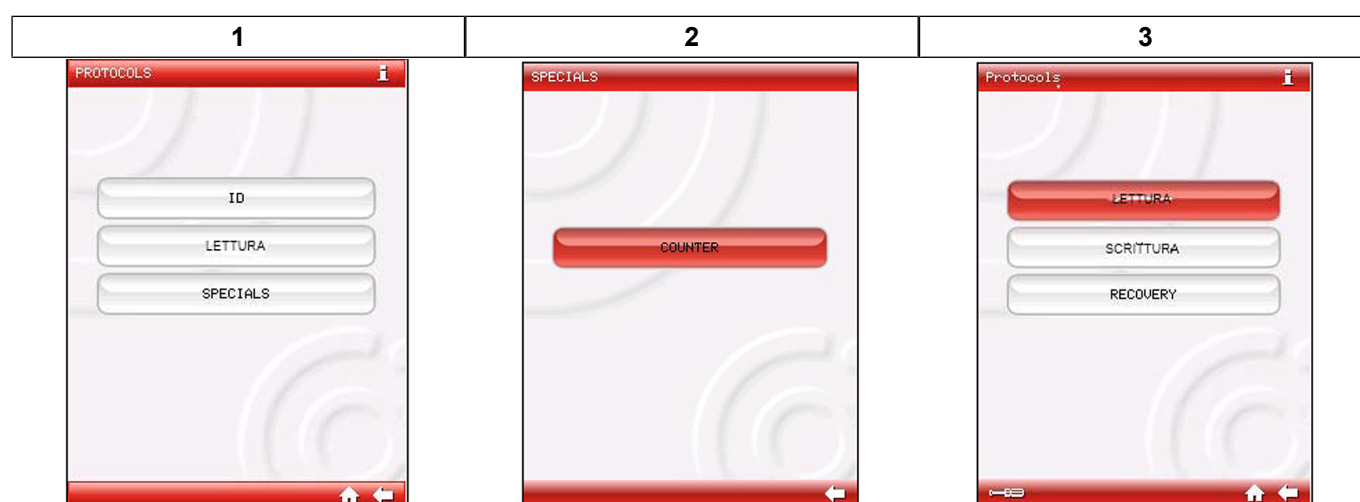
Currently this function is enabled for various DIESEL models of VAG group, EDC16/16+ Bosch ECUs.

### NOTICE

This is an optional function not included in any contract. To obtain it, you should contact the sales department and make an explicit request.

Select in **WORK - VEHICLES (BRAND – MODEL - TYPE)** or directly in **PROTOCOLS** the specific one for the ECU to be modified.

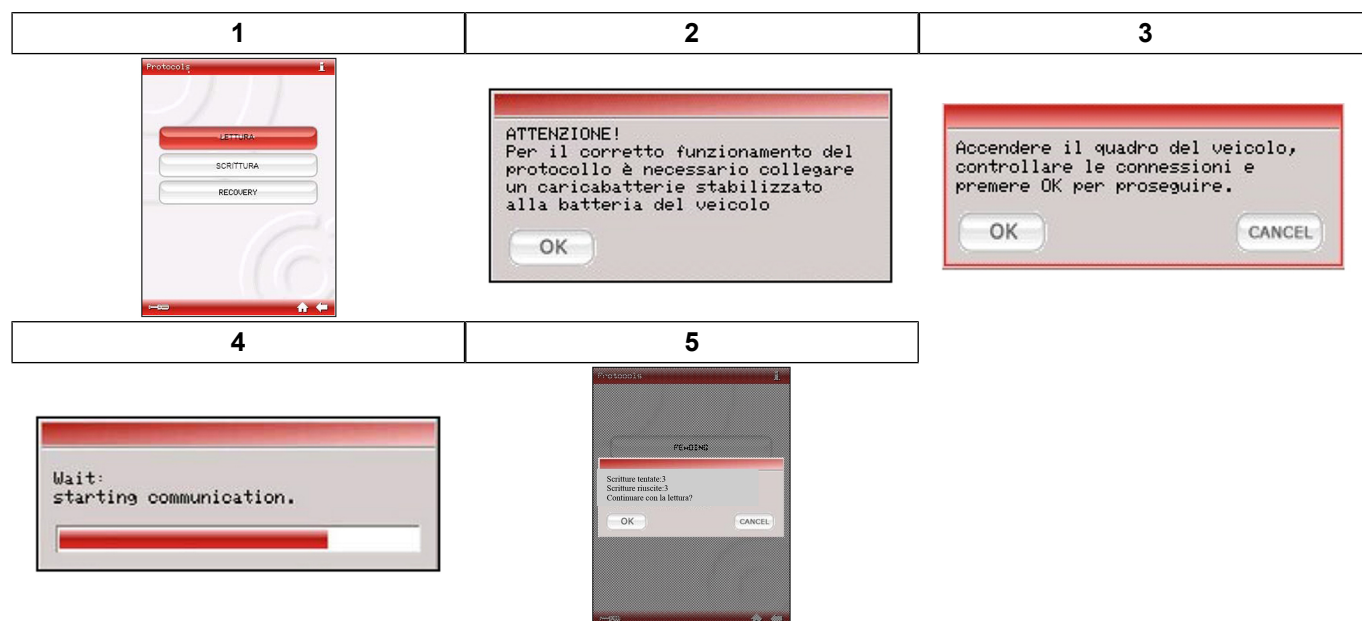
- SPECIALS - COUNTER**



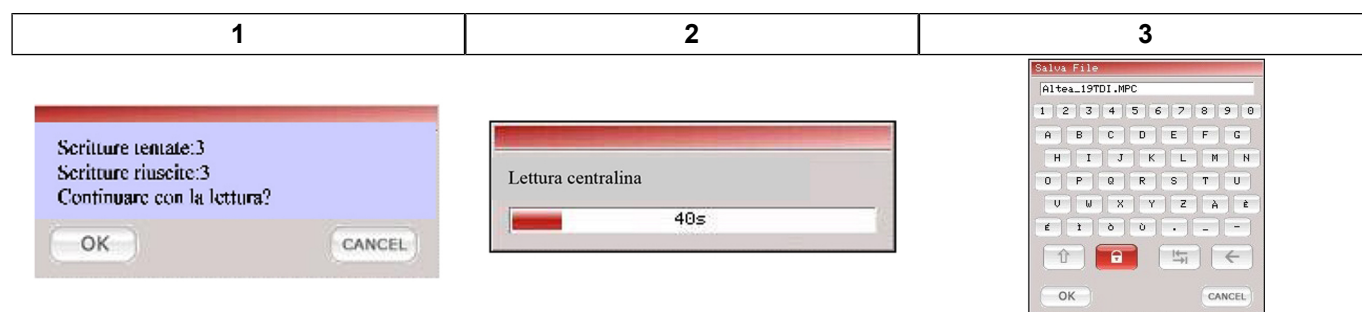
## Display and first reading

In order to work on these counters, you will have to READ and WRITE a part of the FLASH and of the MICROPROCESSOR.

The same file modified by New Genius (with a PATCH) will be written to activate the counter modification mode.



Click **OK** to start the read procedure and carefully follow the instructions given by New Genius to switch the panel ON and OFF, then enter the filename.



## First Write

As already mentioned, access to the counters requires programming the MICROPROCESSOR with a PATCH.

1. Click **WRITE** from the **COUNTERS** menu.
2. Select the previously read file
3. Set the **COUNTER** programming value to **SUCCESSFUL**
4. Press 'OK'.

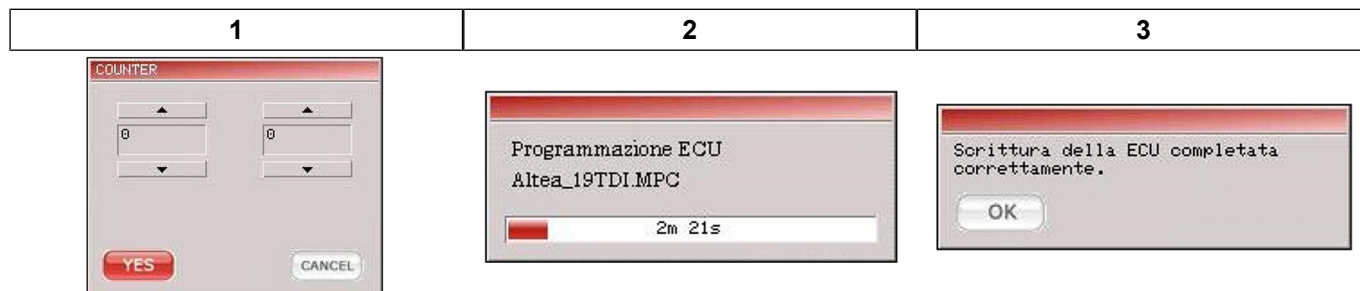
The **ATTEMPTED** programming operation counter will be automatically aligned with the **SUCCESSFUL** programmings.



Set the counters as required using the **UP/DOWN** arrows, press **OK** and follow the instructions.

### NOTICE

The procedure requires the panel to be switched ON and OFF up to four times. Always perform these operations very calmly, waiting 8/10 seconds before pressing OK on New Genius .

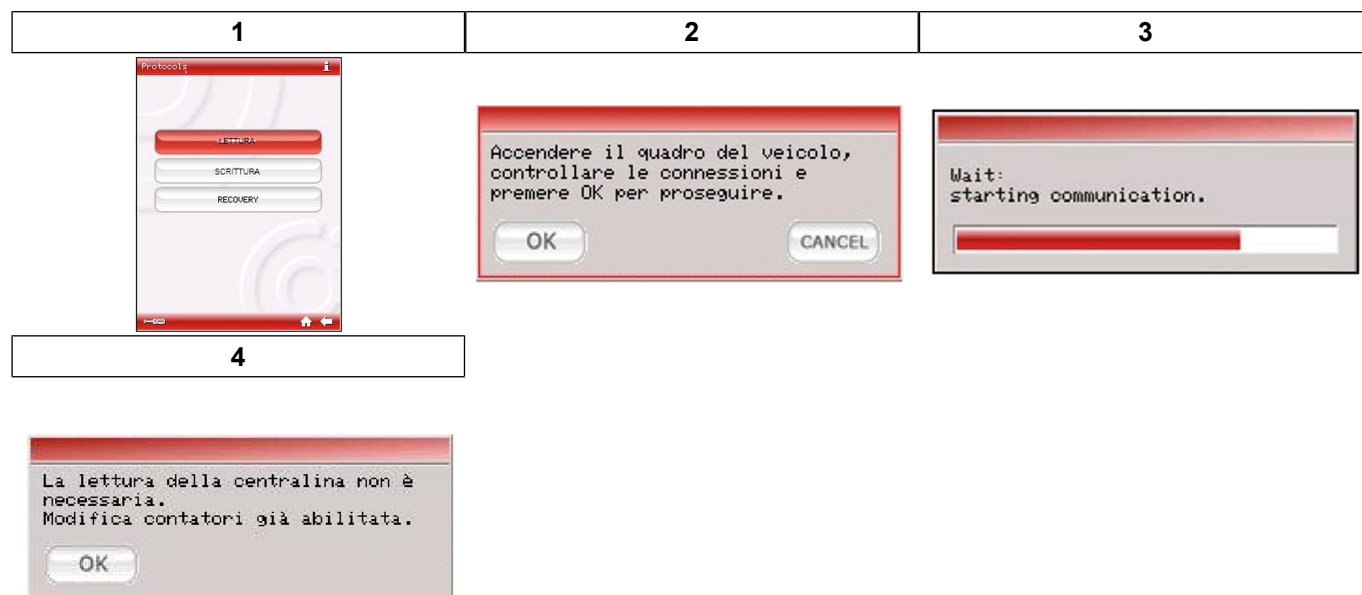




## Display and subsequent modifications

If, after a first modification of the counters, they have to reset again, they may possibly be found directly in the **READ** menu.

In fact, at the next read operation, New Genius recognizes that the patch is already present in the micro processor and so that it is already possible to reset the values again.



In this case, write operations will be faster and a single “switch on-switch off” sequence will suffice.

<b>1</b>	<b>2</b>	<b>3</b>
----------	----------	----------

COUNTER

▲  
1  
▼

▲  
1  
▼

YES
CANCEL

COUNTER

▲  
0  
▼

▲  
0  
▼

YES
CANCEL

Accendere il quadro del veicolo,  
controllare le connessioni e  
premere OK per proseguire.

OK
CANCEL

Scrittura centralina completata.

OK

COUNTER

▲  
1  
▼

▲  
1  
▼

YES
CANCEL

## Counters - Recovery

This function allows a **RECOVERY** of the write procedure in an emergency situation by means of a forced write.



### ATTENTION

***Always contact our technical support BEFORE performing this operation.***

As example, should the writing operation of the patch in the microprocessor go wrong, this recovery function would allow the correct writing of the file.

This mode rewrites the original microprocessor file without the PATCH that allows the counters to be modified.

If, after this Recovery operation, a new set of counters is required, repeat the operation from the beginning read and then write.



Località San Iorio 8/B 15020  
Serralunga di Crea (AL) - Italia  
Ph +39 0142 9552 Fax +39 0142 940094  
Mail: [info@dimsport.it](mailto:info@dimsport.it)  
[www.dimsport.it](http://www.dimsport.it)